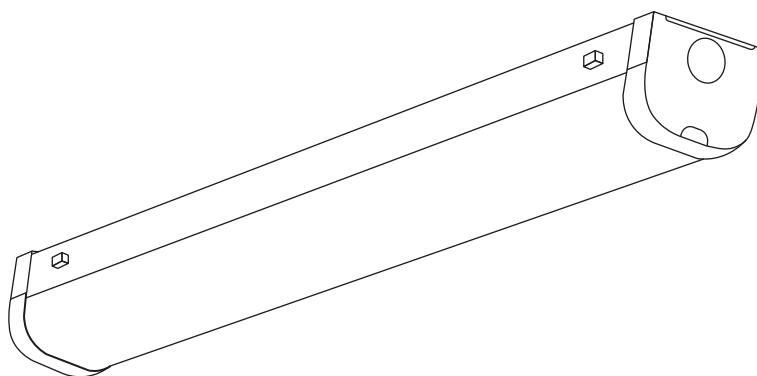




Read these instructions & save for future use

Batten light | 1203mm | 40W | IP20 | tri-white



Article number **136-301**

Brand **Tronix Lighting**

Type **Industrial lighting**

Contents of this product **1x 40W batten light tri-white**

Technical datasheet **Digitally available
on our webshop**



*View instructions and
technical data also on
our website*

TRONIX



Before first use

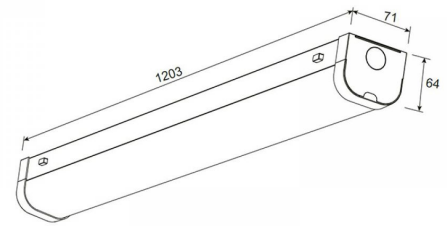
Before getting started with this product, it is advisable to check the order completeness and any damage. If this is the case, please contact Tronix Lighting.

Description

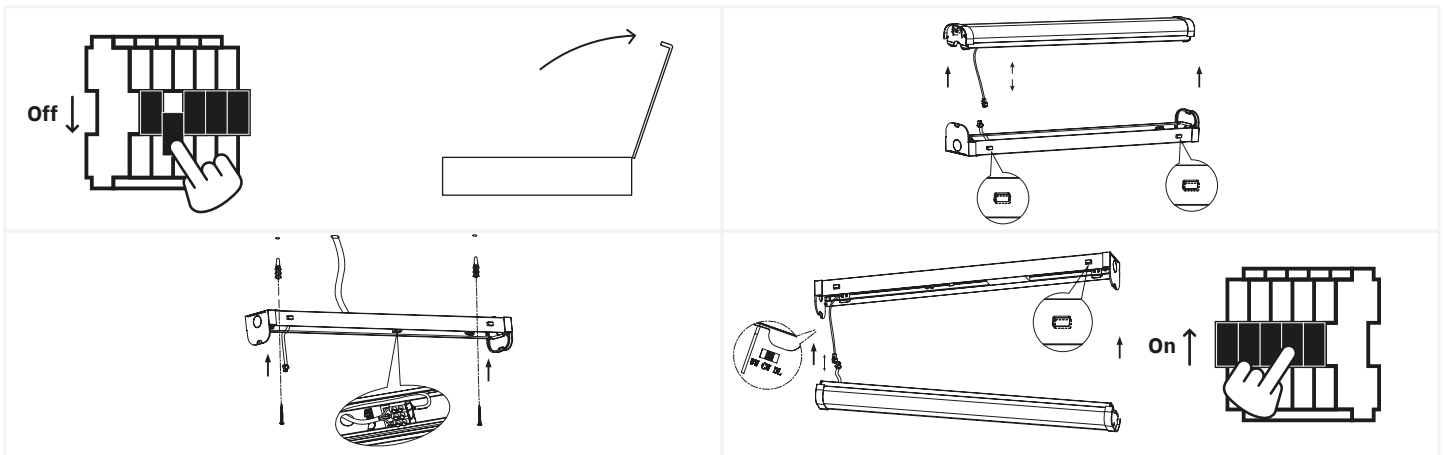
This Batten Light with integrated LEDs is the replacement for traditional fluorescent fixtures. The Batten Light is easy to adjust in the color temperatures 3000K, 4000K or 5700K. Because of its functionality, the Batten Light is very widely applicable. It is not only suitable for (parking) garages, barns or warehouses, but also for general lighting in business premises, offices or schools.

Features

- Adjustable by means of a CCT switch in 3000K, 4000K and 5700K;
- Up to 42 fixtures can be placed in 1 line;
- Simple interconnection through the side of the fixture;
- Long lifespan of 50,000 hours.



Installatie



1. Turn off the power and remove the product and associated parts from the packaging...;
2. Unclip the frame using the two hooks on the side of the lamp, as well as the cable;
3. Drill holes in the ceiling and attach the frame to the desired position. Then connect the wiring inside the frame;
4. Select the desired light color and attach the lamp to the frame. Check the installation and activate the power when it is OK.



Safety

Safety is a top priority at Tronix Lighting. Therefore, we heartily recommend that you follow the following steps closely:

- Keep this manual carefully for future reference;
- Choose a qualified electrician while installing, maintaining or inspecting this product;
- Never look directly into a light source to avoid possible damage to the eye;
- Always ensure that the relevant power group is on non-active when the product is connected;
- Use only recommended combinations (LED drivers, controllers or dimmers) to avoid injury or damage to the product.

Technical problems and repair

Should a product not work properly after installation, or if the product exhibits problems over time, it is advisable to check the following elements:

- Check the wiring and installation of your product;
- Check for the presence of interfering elements such as dust, water or other electronics;
- If possible, try disconnecting the product and testing it in another location to rule out a problem at the location;
- Should you be dealing with a WIFI-based product, check and reset your router's settings.

Should the product still not work after testing, it is recommended to send it in for inspection and/or repair. To do so, please contact Tronix Lighting using nearby details and proof of purchase (packing slip).



CARE



SHARE



CONNECT

Supplier:

Tronix Lighting B.V

Vluchtoord 41
5406 XP Uden, Netherlands

+31 (0)413 330 380
sales@tronixlighting.com

Terms and symbols (as relevant to product)



The **CE mark** indicates that this product complies with EU regulations on safety, health and environmental protection;



The **WEEE symbol** stands for "Waste Electrical and Electronic Equipment Regulation," a directive on the collection, recycling and recovery of electronic waste;



The **Class I symbol** indicates that this product is protected by means of the additional ground cable. This cable is identified by the yellow/green jacket and is attached to this product.

- The product is rated **IP20**. This means that the product is resistant to the penetration of solid objects >12.5 mm and is not resistant to water or moisture.