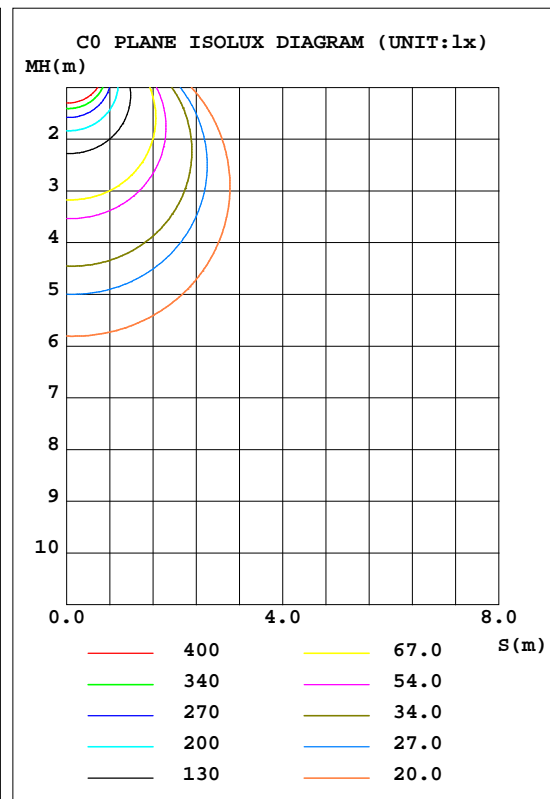
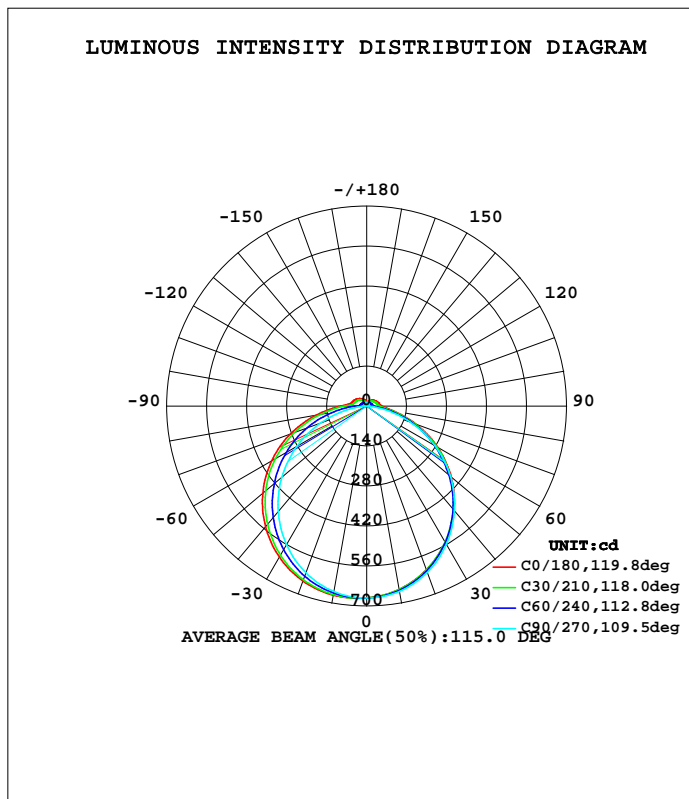


LUMINAIRE PHOTOMETRIC TEST REPORT

Test:U:230.4V I:0.1080A P:24.20W PF:0.9660 Lamp Flux:2181.74x1 lm		
NAME: 136-305_25W_3000K	TYPE:25W	WEIGHT:
DIM.:	SPEC.:3000K	SERIAL No.:1
MFR.: Tronix Lighting	SUR.:0.0708	PROTECTION ANGLE:

DATA OF LAMP		PHOTOMETRIC DATA Eff: 90.15 lm/W			
MODEL	136-305_25W_3000K	I <sub>max</sub> (cd)	674.5	S/MH(C0/180)	1.35
NOMINAL POWER(W)	25	LOR(%)	100.0	S/MH(C90/270)	1.24
RATED VOLTAGE(V)	230	TOTAL FLUX(lm)	2181.7	η UP, DN(C0-180)	3.7, 47.6
NOMINAL FLUX(lm)	2181.74	CIE CLASS	DIRECT	η UP, DN(C180-360)	3.4, 45.2
LAMPS INSIDE	1	η up(%)	7.2	CIBSE SHR NOM	1.25
TEST VOLTAGE(V)	230.4	η down(%)	92.8	CIBSE SHR MAX	1.35



C Range: 0 - 360DEG  
 C Interval: 30.0DEG  
 Test Speed: HIGH  
 Temperature:25.3DEG  
 Operators:DAMIN  
 Test Date:2018-06-25

γ Range: 0 - 180DEG  
 γ Interval: 1.0DEG  
 Test System:EVERFINE GO-2000A\_V1 SYSTEM V2.0.276  
 Humidity:65.0%  
 Test Distance:9.600m [K=1.0000]  
 Remarks:

ZONAL FLUX DIAGRAM

ZONAL FLUX DIAGRAM:

$\gamma$	C0	C45	C90	C135	C180	C225	C270	C315	$\gamma$	$\Phi$ zone	$\Phi$ total	\$lum,lamp
10	672.3	667.6	659.4	654.0	651.7	653.7	659.0	667.0	0- 10	63.60	63.60	2.91,2.91
20	652.1	640.9	621.7	613.2	610.6	612.3	620.0	639.1	10- 20	182.4	246.0	11.3,11.3
30	611.1	592.2	561.3	552.2	550.8	550.2	558.3	589.1	20- 30	277.0	523.0	24,24
40	551.0	524.5	482.3	474.1	475.6	471.0	478.4	521.0	30- 40	335.4	858.4	39.3,39.3
50	474.9	441.8	388.6	383.2	387.0	379.3	383.3	437.9	40- 50	351.2	1210	55.4,55.4
60	384.8	347.4	282.2	282.1	286.4	278.3	276.3	343.1	50- 60	323.0	1533	70.2,70.2
70	283.5	244.4	169.6	176.9	182.1	173.0	161.0	240.3	60- 70	255.9	1789	82,82
80	177.3	139.1	61.20	81.58	93.42	78.48	52.56	134.7	70- 80	162.0	1951	89.4,89.4
90	92.75	58.72	1.747	34.68	52.51	33.83	0.8881	55.60	80- 90	74.51	2025	92.8,92.8
100	58.02	36.31	1.667	29.00	45.59	28.78	1.868	33.48	90-100	37.83	2063	94.6,94.6
110	51.58	32.84	3.712	26.14	41.49	26.22	3.843	31.96	100-110	30.65	2094	96,96
120	46.49	29.59	5.399	23.42	36.84	23.71	5.651	29.51	110-120	26.62	2120	97.2,97.2
130	40.83	25.79	6.763	20.87	31.79	21.20	7.068	25.83	120-130	21.75	2142	98.2,98.2
140	34.99	21.13	7.907	18.30	26.59	18.50	8.252	20.79	130-140	16.40	2158	98.9,98.9
150	29.10	16.64	8.785	15.77	21.40	15.73	9.192	17.36	140-150	11.43	2170	99.4,99.4
160	23.24	13.29	10.06	13.53	16.21	13.47	10.22	13.85	150-160	7.097	2177	99.8,99.8
170	17.54	11.74	11.68	12.27	12.25	12.13	11.83	12.11	160-170	3.751	2181	99.9,99.9
180	11.15	11.61	12.83	11.90	11.13	11.62	12.78	11.92	170-180	1.159	2182	100,100
DEG	LUMINOUS INTENSITY:cd									UNIT:lm		

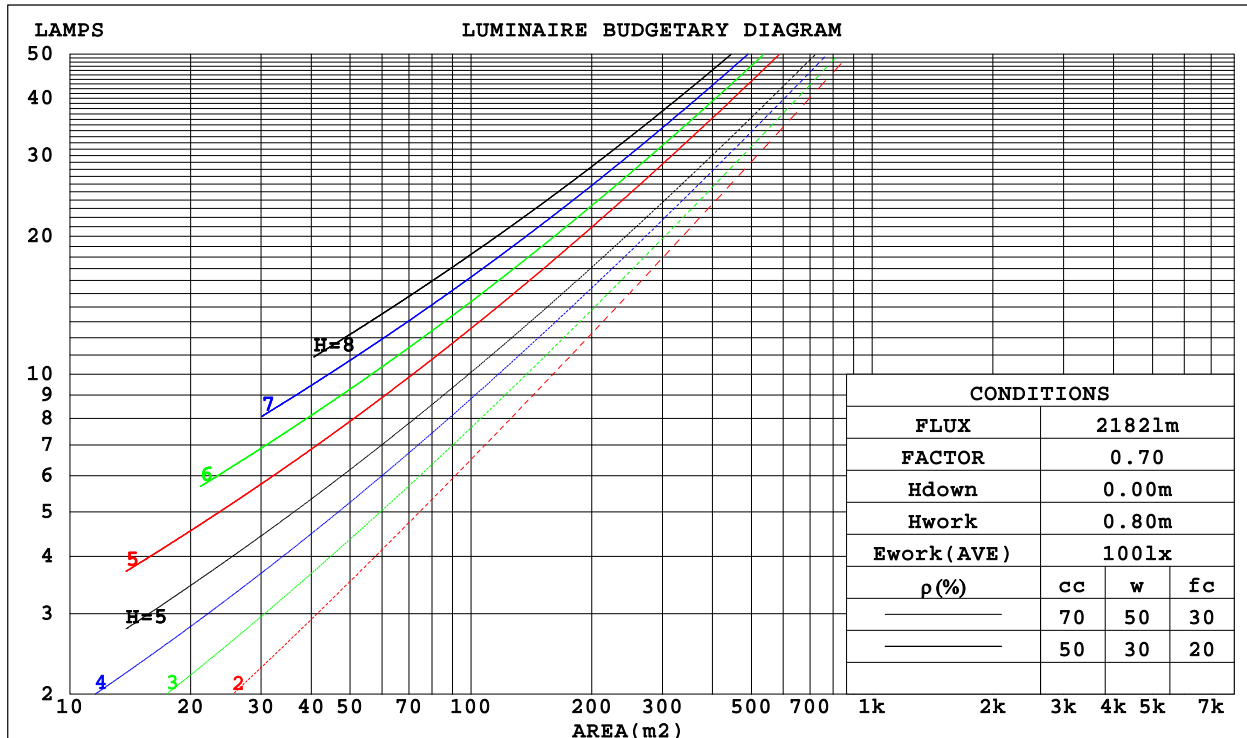
C Range: 0 - 360DEG  
 C Interval: 30.0DEG  
 Test Speed: HIGH  
 Temperature:25.3DEG  
 Operators:DAMIN  
 Test Date:2018-06-25

$\gamma$  Range: 0 - 180DEG  
 $\gamma$  Interval: 1.0DEG  
 Test System:EVERFINE GO-2000A\_V1 SYSTEM V2.0.276  
 Humidity:65.0%  
 Test Distance:9.600m [K=1.0000]  
 Remarks:

CU AND LUMINAIRE BUDGETARY ESTIMATE DIAGRAM

Test:U:230.4V I:0.1080A P:24.20W PF:0.9660 Lamp Flux:2181.74x1 lm		
NAME: 136-305_25W_3000K	TYPE:25W	WEIGHT:
DIM.:	SPEC.:3000K	SERIAL No.:1
MFR.: Tronix Lighting	SUR.:0.0708	PROTECTION ANGLE:

$\rho_{cc}$	80%			70%			50%			30%			10%			0
$\rho_w$	50%	30%	10%	50%	30%	10%	50%	30%	10%	50%	30%	10%	50%	30%	10%	0
$\rho_{fc}$	20%			20%			20%			20%			20%			0
RCR	RCR:Room Cavity Ratio						Coefficients of Utilization(CU)									
0.0	1.17	1.17	1.17	1.14	1.14	1.14	1.07	1.07	1.07	1.01	1.01	1.01	.95	.95	.95	.93
1.0	1.01	.97	.92	.98	.94	.90	.93	.89	.86	.87	.85	.82	.83	.81	.78	.76
2.0	.88	.81	.75	.85	.79	.73	.80	.75	.70	.76	.72	.68	.72	.68	.65	.63
3.0	.77	.68	.62	.75	.67	.61	.71	.64	.59	.67	.61	.57	.63	.59	.55	.52
4.0	.68	.59	.52	.66	.58	.51	.63	.55	.50	.59	.53	.48	.56	.51	.47	.44
5.0	.60	.51	.45	.59	.50	.44	.56	.49	.43	.53	.47	.42	.51	.45	.41	.38
6.0	.54	.45	.39	.53	.44	.38	.50	.43	.37	.48	.41	.36	.46	.40	.36	.33
7.0	.49	.40	.34	.48	.40	.34	.46	.38	.33	.44	.37	.32	.42	.36	.32	.29
8.0	.45	.36	.30	.44	.36	.30	.42	.35	.29	.40	.34	.29	.38	.33	.28	.26
9.0	.41	.33	.27	.40	.32	.27	.38	.31	.26	.37	.31	.26	.35	.30	.25	.24
10.0	.38	.30	.25	.37	.29	.24	.36	.29	.24	.34	.28	.24	.33	.27	.23	.21



C Range: 0 - 360DEG  
 C Interval: 30.0DEG  
 Test Speed: HIGH  
 Temperature:25.3DEG  
 Operators:DAMIN  
 Test Date:2018-06-25

$\gamma$  Range: 0 - 180DEG  
 $\gamma$  Interval: 1.0DEG  
 Test System:EVERFINE GO-2000A\_V1 SYSTEM V2.0.276  
 Humidity:65.0%  
 Test Distance:9.600m [K=1.0000]  
 Remarks:

WEC AND CCEC

Test:U:230.4V I:0.1080A P:24.20W PF:0.9660 Lamp Flux:2181.74x1 lm		
NAME: 136-305_25W_3000K	TYPE:25W	WEIGHT:
DIM.:	SPEC.:3000K	SERIAL No.:1
MFR.: Tronix Lighting	SUR.:0.0708	PROTECTION ANGLE:

pcc	80%			70%			50%			30%			10%			0
pw	50%	30%	10%	50%	30%	10%	50%	30%	10%	50%	30%	10%	50%	30%	10%	0
pfc	20%			20%			20%			20%			20%			0
RCR	RCR:Room Cavity Ratio						Wall Exitance Coefficients(WEC)									
0.0																
1.0	.329	.187	.059	.320	.182	.058	.302	.173	.055	.286	.165	.053	.272	.157	.051	
2.0	.302	.165	.051	.293	.162	.050	.278	.154	.048	.263	.148	.046	.250	.141	.045	
3.0	.276	.147	.044	.268	.144	.043	.254	.138	.042	.241	.132	.041	.229	.127	.039	
4.0	.253	.131	.039	.246	.129	.038	.234	.124	.037	.222	.119	.036	.211	.115	.035	
5.0	.232	.118	.034	.227	.116	.034	.215	.112	.033	.205	.108	.032	.195	.104	.031	
6.0	.215	.108	.031	.210	.106	.030	.199	.102	.030	.190	.099	.029	.181	.095	.028	
7.0	.200	.099	.028	.195	.097	.028	.185	.094	.027	.177	.091	.026	.169	.088	.026	
8.0	.186	.091	.026	.182	.089	.025	.173	.087	.025	.165	.084	.024	.158	.081	.024	
9.0	.174	.084	.024	.170	.083	.023	.162	.080	.023	.155	.078	.022	.149	.075	.022	
10.0	.163	.078	.022	.160	.077	.022	.153	.075	.021	.146	.073	.021	.140	.070	.020	

pcc	80%			70%			50%			30%			10%			0
pw	50%	30%	10%	50%	30%	10%	50%	30%	10%	50%	30%	10%	50%	30%	10%	0
pfc	20%			20%			20%			20%			20%			0
RCR	RCR:Room Cavity Ratio						Ceiling Cavity Exitance Coefficients(CCEC)									
0.0	.245	.245	.245	.210	.210	.210	.143	.143	.143	.082	.082	.082	.026	.026	.026	
1.0	.237	.211	.188	.203	.181	.162	.139	.125	.112	.080	.072	.065	.026	.023	.021	
2.0	.229	.187	.152	.196	.161	.132	.134	.112	.092	.078	.065	.054	.025	.021	.018	
3.0	.221	.170	.129	.190	.147	.112	.130	.102	.079	.075	.060	.046	.024	.019	.015	
4.0	.214	.157	.114	.183	.136	.099	.126	.095	.070	.073	.055	.041	.023	.018	.014	
5.0	.206	.147	.103	.177	.127	.090	.122	.089	.063	.071	.052	.038	.023	.017	.012	
6.0	.199	.139	.095	.171	.120	.083	.118	.084	.059	.069	.049	.035	.022	.016	.012	
7.0	.192	.132	.090	.165	.114	.078	.114	.080	.055	.066	.047	.033	.021	.015	.011	
8.0	.186	.126	.085	.160	.110	.074	.111	.077	.053	.064	.045	.031	.021	.015	.010	
9.0	.180	.121	.082	.155	.105	.072	.107	.074	.051	.062	.044	.030	.020	.014	.010	
10.0	.174	.117	.079	.150	.102	.069	.104	.072	.049	.061	.042	.029	.020	.014	.010	

C Range: 0 - 360DEG  
 C Interval: 30.0DEG  
 Test Speed: HIGH  
 Temperature:25.3DEG  
 Operators:DAMIN  
 Test Date:2018-06-25

γ Range: 0 - 180DEG  
 γ Interval: 1.0DEG  
 Test System:EVERFINE GO-2000A\_V1 SYSTEM V2.0.276  
 Humidity:65.0%  
 Test Distance:9.600m [K=1.0000]  
 Remarks:

Uncorrected UGR Table

Test:U:230.4V I:0.1080A P:24.20W PF:0.9660 Lamp Flux:2181.74x1 lm										
NAME: 136-305_25W_3000K					TYPE:25W			WEIGHT:		
DIM.:					SPEC.:3000K			SERIAL No.:1		
MFR.: Tronix Lighting					SUR.:0.0708			PROTECTION ANGLE:		
ceiling/cavity	0.7	0.7	0.5	0.5	0.3	0.7	0.7	0.5	0.5	0.3
walls	0.5	0.3	0.5	0.3	0.3	0.5	0.3	0.5	0.3	0.3
working plane	0.2	0.2	0.2	0.2	0.2	0.2	0.2	0.2	0.2	0.2
Room dimensions	Viewed crosswise					Viewed endwise				
x = 2H y = 2H	21.2	22.6	21.6	23.0	23.3	20.0	21.5	20.4	21.8	22.1
3H	23.2	24.6	23.6	24.9	25.3	21.5	22.8	21.9	23.2	23.6
4H	24.2	25.5	24.6	25.8	26.3	22.0	23.3	22.4	23.7	24.1
6H	25.2	26.3	25.6	26.7	27.2	22.4	23.6	22.8	24.0	24.4
8H	25.6	26.8	26.1	27.2	27.6	22.4	23.6	22.9	24.0	24.4
12H	26.1	27.2	26.6	27.6	28.1	22.4	23.6	22.9	24.0	24.4
4H 2H	21.8	23.0	22.2	23.4	23.8	20.9	22.2	21.3	22.5	22.9
3H	24.0	25.1	24.5	25.5	26.0	22.6	23.7	23.0	24.1	24.6
4H	25.2	26.2	25.6	26.6	27.1	23.3	24.3	23.8	24.7	25.2
6H	26.3	27.2	26.8	27.7	28.2	23.8	24.7	24.3	25.2	25.7
8H	26.9	27.7	27.4	28.2	28.7	23.9	24.8	24.4	25.2	25.8
12H	27.5	28.2	28.0	28.7	29.3	24.0	24.7	24.5	25.3	25.8
8H 4H	25.5	26.3	26.0	26.8	27.3	23.9	24.7	24.4	25.2	25.7
6H	26.8	27.5	27.4	28.0	28.6	24.6	25.3	25.2	25.8	26.4
8H	27.5	28.2	28.1	28.7	29.3	24.9	25.5	25.4	26.0	26.7
12H	28.3	28.9	28.9	29.5	30.1	25.1	25.6	25.6	26.2	26.8
12H 4H	25.5	26.2	26.0	26.7	27.3	24.0	24.7	24.5	25.3	25.8
6H	26.9	27.5	27.5	28.1	28.7	24.8	25.5	25.4	26.0	26.6
8H	27.7	28.2	28.3	28.8	29.4	25.2	25.8	25.8	26.3	27.0
Variations with the observer position at spacings:										
S = 1.0H	+ 0.1 / - 0.1					+ 0.1 / - 0.2				
1.5H	+ 0.2 / - 0.3					+ 0.2 / - 0.4				
2.0H	+ 0.2 / - 0.3					+ 0.2 / - 0.5				

CIE Pub.117 Corrected 2182 lm Total Lamp Luminous Flux.(8log(F/F0) = 2.7)

C Range: 0 - 360DEG  
 C Interval: 30.0DEG  
 Test Speed: HIGH  
 Temperature:25.3DEG  
 Operators:DAMIN  
 Test Date:2018-06-25

γ Range: 0 - 180DEG  
 γ Interval: 1.0DEG  
 Test System:EVERFINE GO-2000A\_V1 SYSTEM V2.0.276  
 Humidity:65.0%  
 Test Distance:9.600m [K=1.0000]  
 Remarks:

UTILIZATION FACTORS TABLE

Test:U:230.4V I:0.1080A P:24.20W PF:0.9660 Lamp Flux:2181.74x1 lm		
NAME: 136-305_25W_3000K	TYPE:25W	WEIGHT:
DIM.:	SPEC.:3000K	SERIAL No.:1
MFR.: Tronix Lighting	SUR.:0.0708	PROTECTION ANGLE:

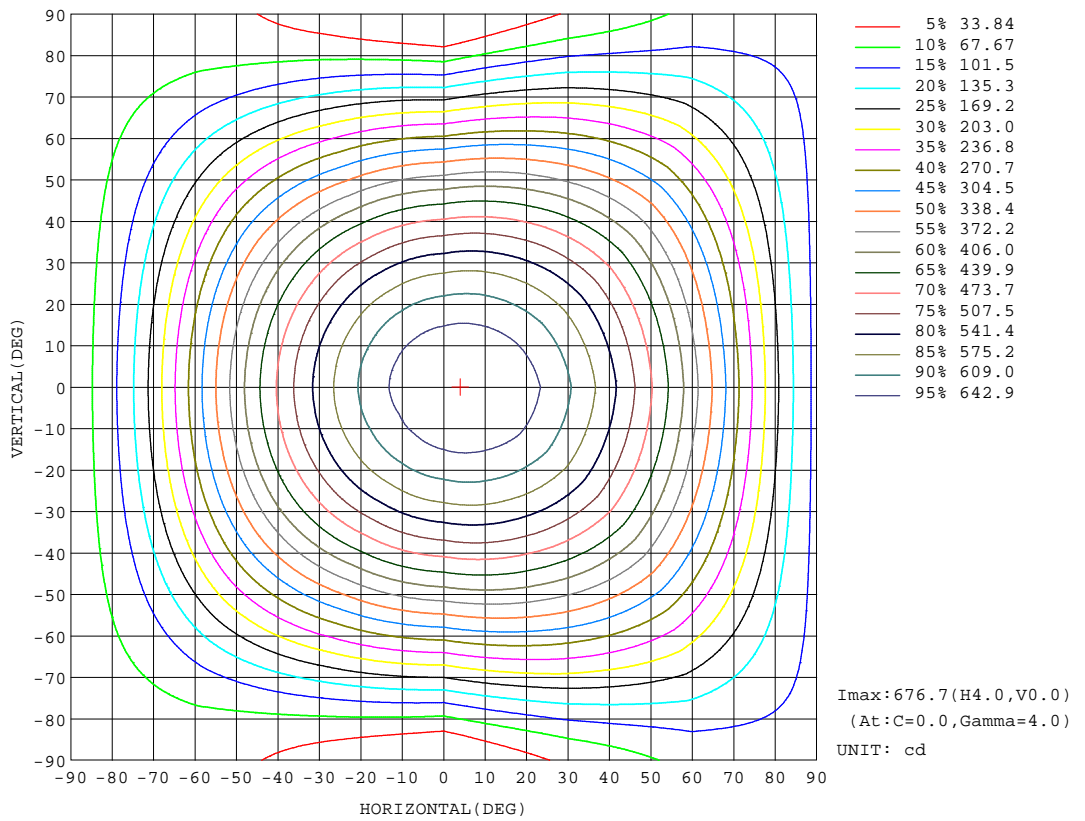
REFLECTANCE										
Ceiling	0.8	0.8	0.8	0.7	0.7	0.7	0.5	0.5	0.5	0
Walls	0.7	0.5	0.3	0.7	0.5	0.3	0.7	0.5	0.3	0
Working plane	0.2	0.2	0.2	0.2	0.2	0.2	0.2	0.2	0.2	0
ROOM INDEX	UTILIZATION FACTORS(PERCENT) k(RI) x RCR = 5									
k = 0.60	54	42	35	53	42	35	52	41	35	28
0.80	64	52	44	63	51	44	61	50	44	36
1.00	72	61	53	71	60	53	68	61	52	44
1.25	79	68	61	77	67	60	74	65	59	51
1.50	84	74	66	82	73	66	78	70	64	55
2.00	91	82	75	89	80	74	85	77	72	63
2.50	95	87	80	93	85	79	88	82	76	66
3.00	99	91	85	96	89	84	91	85	81	70
4.00	103	97	91	100	94	90	95	90	86	75
5.00	106	100	96	103	98	94	97	93	89	78
ROOM INDEX	UF(total)									Direct
According to DIN EN 13032-2 2004			Suspended				SHRNOM = 1.25			

C Range: 0 - 360DEG  
 C Interval: 30.0DEG  
 Test Speed: HIGH  
 Temperature:25.3DEG  
 Operators:DAMIN  
 Test Date:2018-06-25

γ Range: 0 - 180DEG  
 γ Interval: 1.0DEG  
 Test System:EVERFINE GO-2000A\_V1 SYSTEM V2.0.276  
 Humidity:65.0%  
 Test Distance:9.600m [K=1.0000]  
 Remarks:

ISOCANDELA DIAGRAM

Test:U:230.4V I:0.1080A P:24.20W PF:0.9660 Lamp Flux:2181.74x1 lm		
NAME: 136-305_25W_3000K	TYPE:25W	WEIGHT:
DIM.:	SPEC.:3000K	SERIAL No.:1
MFR.: Tronix Lighting	SUR.:0.0708	PROTECTION ANGLE:



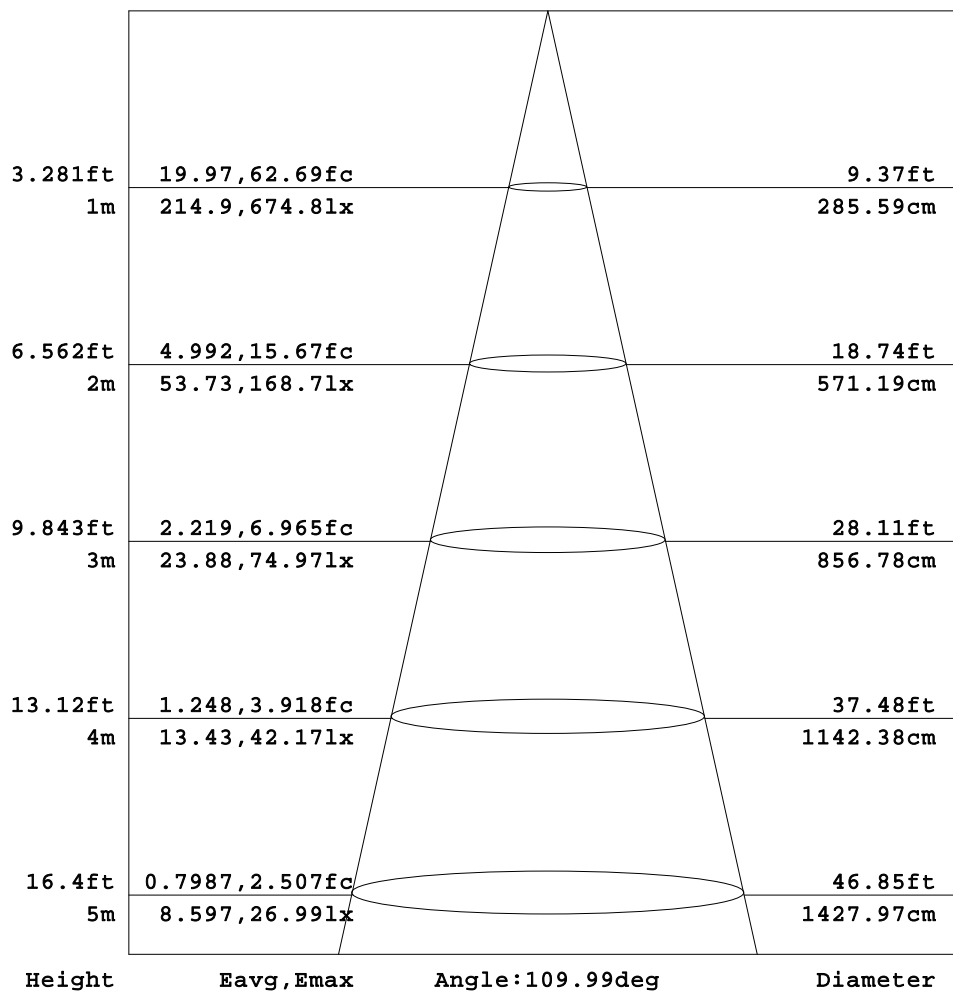
C Range: 0 - 360DEG  
 C Interval: 30.0DEG  
 Test Speed: HIGH  
 Temperature:25.3DEG  
 Operators:DAMIN  
 Test Date:2018-06-25

γ Range: 0 - 180DEG  
 γ Interval: 1.0DEG  
 Test System:EVERFINE GO-2000A\_V1 SYSTEM V2.0.276  
 Humidity:65.0%  
 Test Distance:9.600m [K=1.0000]  
 Remarks:

AAI Figure

Test:U:230.4V I:0.1080A P:24.20W PF:0.9660 Lamp Flux:2181.74x1 lm		
NAME: 136-305_25W_3000K	TYPE:25W	WEIGHT:
DIM.:	SPEC.:3000K	SERIAL No.:1
MFR.: Tronix Lighting	SUR.:0.0708	PROTECTION ANGLE:

Flux out:1377 lm



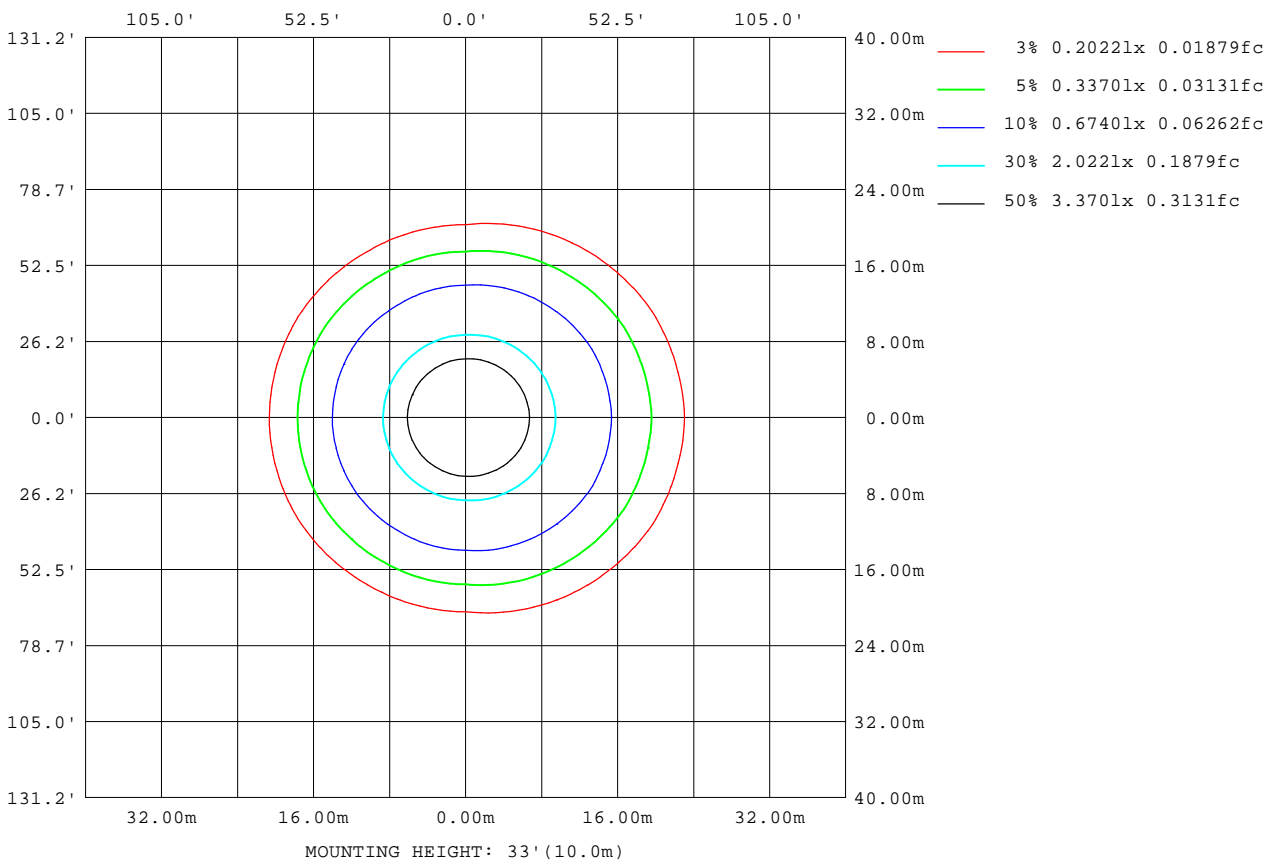
Note: The Curves indicate the illuminated area and the average illumination when the luminaire is at different distance.

C Range: 0 - 360DEG  
 C Interval: 30.0DEG  
 Test Speed: HIGH  
 Temperature: 25.3DEG  
 Operators: DAMIN  
 Test Date: 2018-06-25

γ Range: 0 - 180DEG  
 γ Interval: 1.0DEG  
 Test System: EVERFINE GO-2000A\_V1 SYSTEM V2.0.276  
 Humidity: 65.0%  
 Test Distance: 9.600m [K=1.0000]  
 Remarks:

ISOLUX DIAGRAM

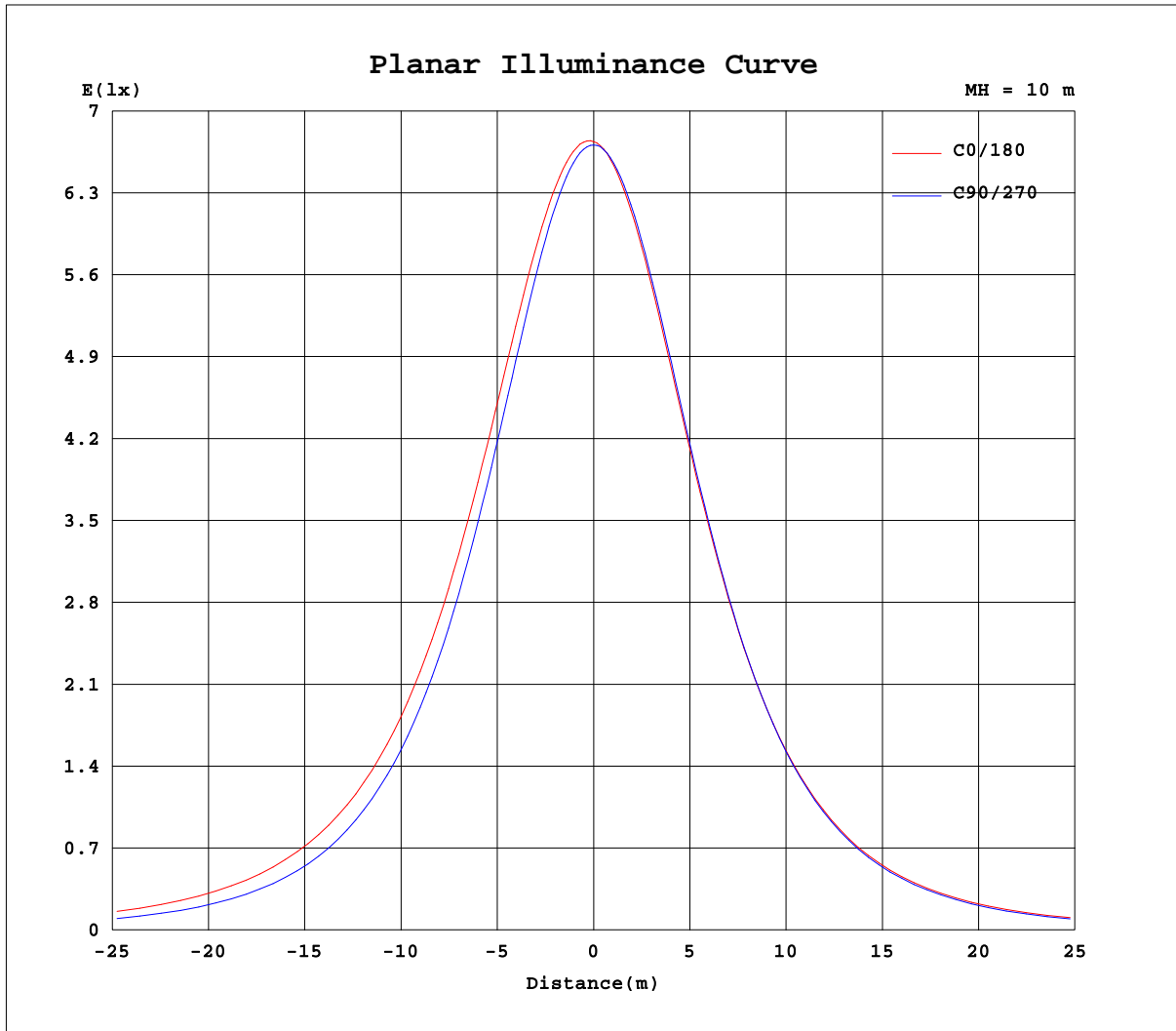
Test:U:230.4V I:0.1080A P:24.20W PF:0.9660 Lamp Flux:2181.74x1 lm		
NAME: 136-305_25W_3000K	TYPE:25W	WEIGHT:
DIM.:	SPEC.:3000K	SERIAL No.:1
MFR.: Tronix Lighting	SUR.:0.0708	PROTECTION ANGLE:



C Range: 0 - 360DEG  
 C Interval: 30.0DEG  
 Test Speed: HIGH  
 Temperature:25.3DEG  
 Operators:DAMIN  
 Test Date:2018-06-25

γ Range: 0 - 180DEG  
 γ Interval: 1.0DEG  
 Test System:EVERFINE GO-2000A\_V1 SYSTEM V2.0.276  
 Humidity:65.0%  
 Test Distance:9.600m [K=1.0000]  
 Remarks:

Planar Illuminance Curve



C Range: 0 - 360DEG  
 C Interval: 30.0DEG  
 Test Speed: HIGH  
 Temperature: 25.3DEG  
 Operators: DAMIN  
 Test Date: 2018-06-25

$\gamma$  Range: 0 - 180DEG  
 $\gamma$  Interval: 1.0DEG  
 Test System: EVERFINE GO-2000A\_V1 SYSTEM V2.0.276  
 Humidity: 65.0%  
 Test Distance: 9.600m [K=1.0000]  
 Remarks:

LUMINOUS DISTRIBUTION INTENSITY DATA

Test:U:230.4V I:0.1080A P:24.20W PF:0.9660 Lamp Flux:2181.74x1 lm		
NAME: 136-305_25W_3000K	TYPE:25W	WEIGHT:
DIM.:	SPEC.:3000K	SERIAL No.:1
MFR.: Tronix Lighting	SUR.:0.0708	PROTECTION ANGLE:

Table--1

UNIT: cd

C( DEG) γ (DEG)	0	30	60	90	120	150	180	210	240	270	300	330						
0	672	672	672	672	672	672	672	672	672	672	672	672						
5	674	674	671	669	666	665	665	665	667	669	671	673						
10	672	670	665	659	655	653	652	652	655	659	664	670						
15	665	661	653	644	637	635	634	634	638	643	651	661						
20	652	647	634	622	614	612	611	611	614	620	632	646						
25	634	628	610	594	586	584	583	582	585	592	608	625						
30	611	603	581	561	552	552	551	549	551	558	578	600						
35	583	574	547	524	514	515	515	512	513	521	544	570						
40	551	540	509	482	473	475	476	472	471	478	506	536						
45	515	502	467	437	428	433	433	428	425	433	464	499						
50	475	461	422	389	380	387	387	383	376	383	418	457						
55	431	417	375	336	330	337	337	334	324	331	370	413						
60	385	369	325	282	278	286	286	284	273	276	320	366						
65	335	319	274	226	225	234	234	231	221	219	269	316						
70	284	267	222	170	172	182	182	178	168	161	217	264						
75	230	214	168	114	121	132	133	128	117	104	164	211						
80	177	162	117	61.2	74.1	89.1	93.4	85.9	71.0	52.6	112	157						
85	130	114	71.1	19.6	39.5	59.9	66.6	57.9	37.9	14.2	66.6	110						
90	92.8	77.9	39.5	1.75	24.2	45.2	52.5	44.2	23.4	0.89	36.0	75.2						
95	69.4	56.9	26.8	0.92	20.8	40.4	47.6	40.0	20.5	0.98	24.9	55.2						
100	58.0	48.1	24.5	1.67	19.5	38.5	45.6	38.2	19.3	1.87	19.8	47.1						
105	54.0	45.5	23.4	2.63	18.4	36.7	43.6	36.5	18.4	2.77	20.4	44.7						
110	51.6	43.5	22.1	3.71	17.4	34.9	41.5	34.7	17.7	3.84	21.2	42.8						
115	49.1	41.5	21.2	4.63	16.6	33.0	39.2	32.9	17.0	4.88	20.7	40.9						
120	46.5	39.4	19.8	5.40	15.9	31.0	36.8	31.0	16.4	5.65	20.1	38.9						
125	43.7	37.2	18.0	6.10	15.3	28.9	34.3	29.0	15.9	6.42	18.7	36.8						
130	40.8	35.0	16.6	6.76	14.9	26.9	31.8	27.1	15.3	7.07	17.4	34.3						
135	37.9	32.0	15.4	7.37	14.4	24.8	29.2	25.0	14.7	7.68	16.2	27.1						
140	35.0	27.8	14.4	7.91	13.8	22.8	26.6	23.0	14.0	8.25	15.2	26.4						
145	32.0	23.9	13.6	8.38	13.3	20.8	24.0	20.9	13.3	8.80	14.2	24.3						
150	29.1	20.6	12.7	8.79	12.8	18.8	21.4	18.8	12.6	9.19	13.4	21.4						
155	26.2	17.7	12.0	9.15	12.5	16.8	18.7	16.8	12.4	9.48	12.5	18.4						
160	23.2	15.3	11.3	10.1	12.3	14.7	16.2	14.8	12.2	10.2	11.8	15.9						
165	20.4	13.3	11.3	10.9	12.4	13.3	13.9	13.3	12.2	11.0	11.5	13.9						
170	17.5	11.7	11.8	11.7	12.2	12.4	12.3	12.1	12.1	11.8	11.9	12.3						
175	14.6	10.5	12.2	12.3	12.2	11.6	10.3	11.3	12.3	12.4	12.3	11.1						
180	11.1	10.6	12.6	12.8	12.5	11.3	11.1	10.6	12.6	12.8	12.5	11.3						

C Range: 0 - 360DEG  
 C Interval: 30.0DEG  
 Test Speed: HIGH  
 Temperature:25.3DEG  
 Operators:DAMIN  
 Test Date:2018-06-25

γ Range: 0 - 180DEG  
 γ Interval: 1.0DEG  
 Test System:EVERFINE GO-2000A\_V1 SYSTEM V2.0.276  
 Humidity:65.0%  
 Test Distance:9.600m [K=1.0000]  
 Remarks: