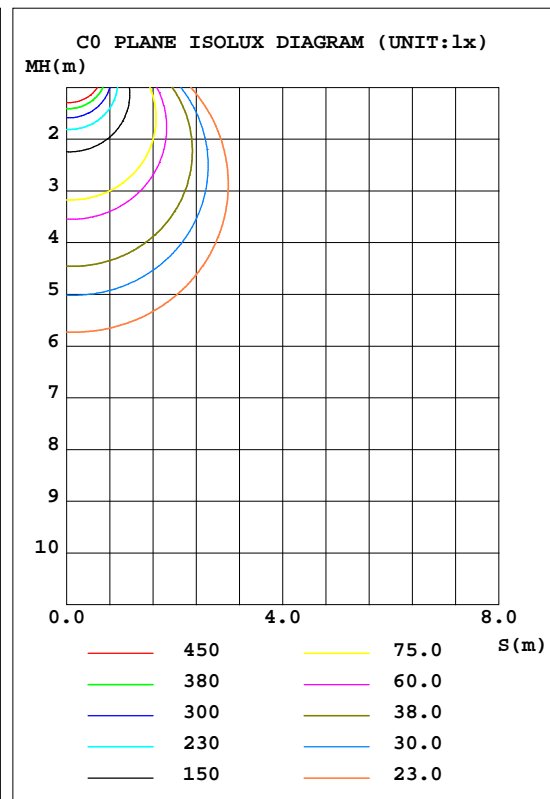
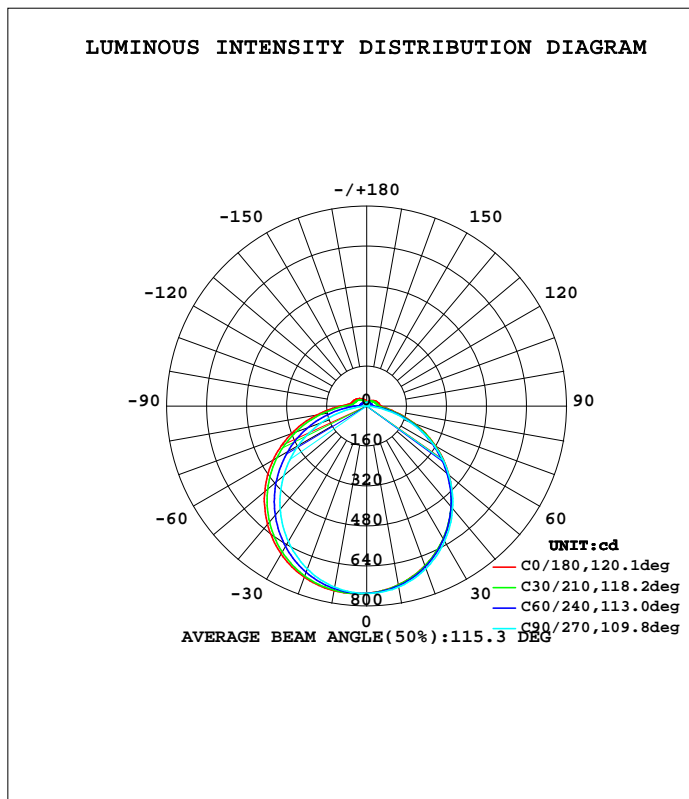


LUMINAIRE PHOTOMETRIC TEST REPORT

Test:U:230.5V I:0.1080A P:24.20W PF:0.9660 Lamp Flux:2440.89x1 lm		
NAME: 136-305_25W_5700K	TYPE:25W	WEIGHT:
DIM.:	SPEC.:5700K	SERIAL No.:1
MFR.: Tronix Lighting	SUR.:0.0708	PROTECTION ANGLE:

DATA OF LAMP		PHOTOMETRIC DATA Eff: 100.86 lm/W			
MODEL	136-305_25W_5700K	I <sub>max</sub> (cd)	752.5	S/MH(C0/180)	1.35
NOMINAL POWER(W)	24	LOR(%)	100.0	S/MH(C90/270)	1.24
RATED VOLTAGE(V)	230	TOTAL FLUX(lm)	2440.9	η UP, DN(C0-180)	3.8, 47.6
NOMINAL FLUX(lm)	2440.89	CIE CLASS	DIRECT	η UP, DN(C180-360)	3.4, 45.2
LAMPS INSIDE	1	η up(%)	7.2	CIBSE SHR NOM	1.25
TEST VOLTAGE(V)	230.5	η down(%)	92.8	CIBSE SHR MAX	1.35



C Range: 0 - 360DEG  
 C Interval: 30.0DEG  
 Test Speed: HIGH  
 Temperature:25.3DEG  
 Operators:DAMIN  
 Test Date:2018-06-25

γ Range: 0 - 180DEG  
 γ Interval: 1.0DEG  
 Test System:EVERFINE GO-2000A\_V1 SYSTEM V2.0.276  
 Humidity:65.0%  
 Test Distance:9.600m [K=1.0000]  
 Remarks:

ZONAL FLUX DIAGRAM

ZONAL FLUX DIAGRAM:

$\gamma$	C0	C45	C90	C135	C180	C225	C270	C315	$\gamma$	$\Phi$ zone	$\Phi$ total	$\$lum, lamp$
10	750.2	745.0	735.8	729.2	726.1	729.1	735.2	744.7	0- 10	70.95	70.95	2.91,2.91
20	728.9	715.9	694.0	684.1	680.4	682.8	692.5	714.5	10- 20	203.6	274.5	11.2,11.2
30	683.9	662.4	626.6	615.7	613.5	613.9	624.1	659.6	20- 30	309.3	583.9	23.9,23.9
40	617.5	587.2	538.5	528.3	529.4	525.7	535.2	584.1	30- 40	374.8	958.6	39.3,39.3
50	532.9	495.5	434.1	426.7	430.7	423.2	429.1	491.6	40- 50	392.7	1351	55.4,55.4
60	432.5	390.4	315.5	314.0	318.3	310.0	309.4	385.6	50- 60	361.6	1713	70.2,70.2
70	319.4	275.0	189.6	196.6	201.8	192.5	180.4	270.5	60- 70	286.6	1999	81.9,81.9
80	201.2	157.1	68.16	90.12	102.8	86.65	58.79	152.2	70- 80	181.5	2181	89.4,89.4
90	105.5	66.73	1.961	37.91	57.46	37.04	1.015	63.20	80- 90	83.50	2264	92.8,92.8
100	66.27	41.50	1.942	31.75	49.96	31.60	2.132	38.92	90-100	42.49	2307	94.5,94.5
110	59.00	37.64	4.258	28.71	45.54	28.86	4.409	36.57	100-110	34.45	2341	95.9,95.9
120	53.19	33.96	6.198	25.80	40.53	26.16	6.432	33.77	110-120	29.98	2371	97.2,97.2
130	46.71	29.62	7.735	23.07	35.08	23.44	8.011	29.59	120-130	24.52	2396	98.2,98.2
140	40.01	24.39	9.048	20.30	29.37	20.51	9.276	23.39	130-140	18.52	2414	98.9,98.9
150	33.23	19.24	10.03	17.54	23.73	17.50	10.27	19.64	140-150	12.90	2427	99.4,99.4
160	26.53	15.30	11.41	15.13	18.07	15.09	11.58	15.65	150-160	8.019	2435	99.8,99.8
170	19.98	13.40	13.22	13.79	13.79	13.65	13.42	13.70	160-170	4.240	2440	99.9,99.9
180	12.69	13.18	14.55	13.50	12.70	13.17	14.54	13.48	170-180	1.313	2441	100,100
DEG	LUMINOUS INTENSITY:cd								UNIT:lm			

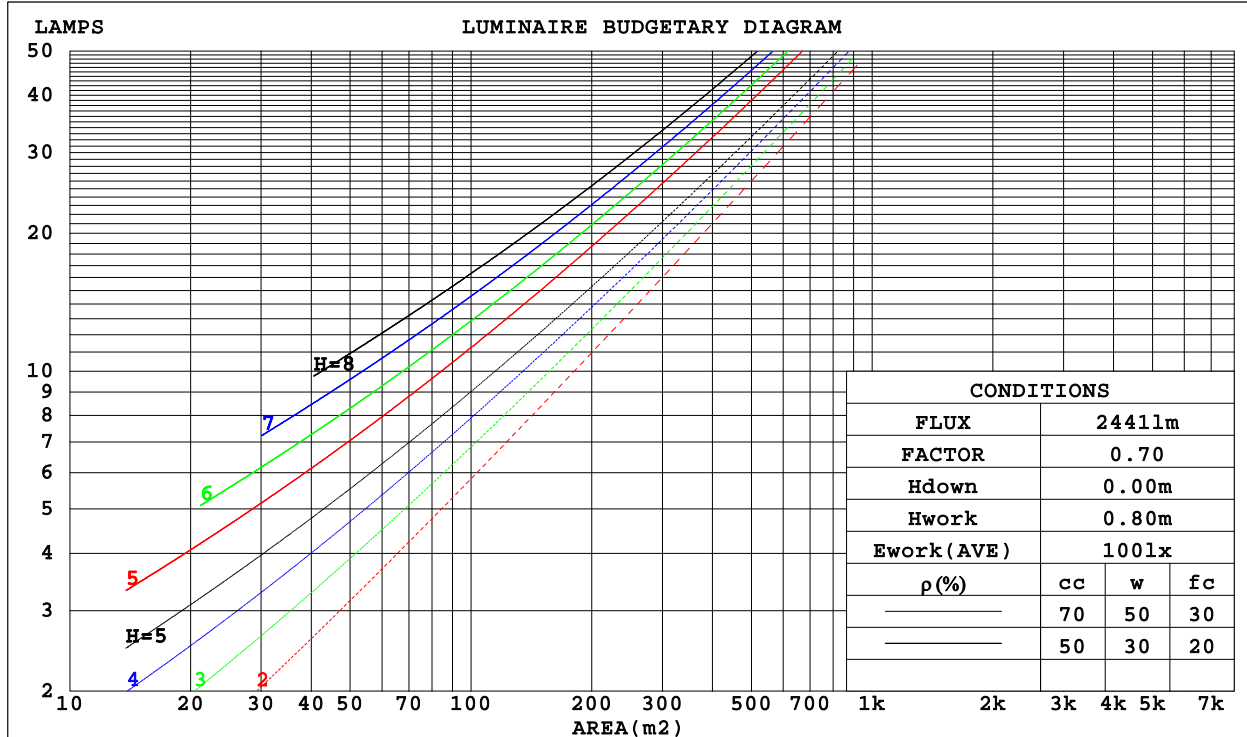
C Range: 0 - 360DEG  
 C Interval: 30.0DEG  
 Test Speed: HIGH  
 Temperature:25.3DEG  
 Operators:DAMIN  
 Test Date:2018-06-25

$\gamma$  Range: 0 - 180DEG  
 $\gamma$  Interval: 1.0DEG  
 Test System:EVERFINE GO-2000A\_V1 SYSTEM V2.0.276  
 Humidity:65.0%  
 Test Distance:9.600m [K=1.0000]  
 Remarks:

CU AND LUMINAIRE BUDGETARY ESTIMATE DIAGRAM

Test:U:230.5V I:0.1080A P:24.20W PF:0.9660 Lamp Flux:2440.89x1 lm		
NAME: 136-305_25W_5700K	TYPE:25W	WEIGHT:
DIM.:	SPEC.:5700K	SERIAL No.:1
MFR.: Tronix Lighting	SUR.:0.0708	PROTECTION ANGLE:

$\rho_{cc}$	80%			70%			50%			30%			10%			0
$\rho_w$	50%	30%	10%	50%	30%	10%	50%	30%	10%	50%	30%	10%	50%	30%	10%	0
$\rho_{fc}$	20%			20%			20%			20%			20%			0
RCR	RCR:Room Cavity Ratio						Coefficients of Utilization(CU)									
0.0	1.17	1.17	1.17	1.14	1.14	1.14	1.07	1.07	1.07	1.01	1.01	1.01	.95	.95	.95	.93
1.0	1.01	.97	.92	.98	.94	.90	.93	.89	.86	.87	.85	.82	.83	.80	.78	.76
2.0	.88	.81	.75	.85	.79	.73	.80	.75	.70	.76	.72	.68	.72	.68	.65	.62
3.0	.77	.68	.62	.75	.67	.61	.71	.64	.59	.67	.61	.57	.63	.59	.55	.52
4.0	.68	.59	.52	.66	.58	.51	.62	.55	.50	.59	.53	.48	.56	.51	.47	.44
5.0	.60	.51	.45	.59	.50	.44	.56	.48	.43	.53	.47	.42	.51	.45	.41	.38
6.0	.54	.45	.39	.53	.44	.38	.50	.43	.37	.48	.41	.36	.46	.40	.36	.33
7.0	.49	.40	.34	.48	.40	.34	.46	.38	.33	.44	.37	.32	.42	.36	.32	.29
8.0	.45	.36	.30	.44	.36	.30	.42	.35	.29	.40	.34	.29	.38	.33	.28	.26
9.0	.41	.33	.27	.40	.32	.27	.38	.31	.26	.37	.30	.26	.35	.30	.25	.23
10.0	.38	.30	.25	.37	.29	.24	.36	.29	.24	.34	.28	.23	.33	.27	.23	.21



C Range: 0 - 360DEG  
 C Interval: 30.0DEG  
 Test Speed: HIGH  
 Temperature:25.3DEG  
 Operators:DAMIN  
 Test Date:2018-06-25

$\gamma$  Range: 0 - 180DEG  
 $\gamma$  Interval: 1.0DEG  
 Test System:EVERFINE GO-2000A\_V1 SYSTEM V2.0.276  
 Humidity:65.0%  
 Test Distance:9.600m [K=1.0000]  
 Remarks:

WEC AND CCEC

Test:U:230.5V I:0.1080A P:24.20W PF:0.9660 Lamp Flux:2440.89x1 lm		
NAME: 136-305_25W_5700K	TYPE:25W	WEIGHT:
DIM.:	SPEC.:5700K	SERIAL No.:1
MFR.: Tronix Lighting	SUR.:0.0708	PROTECTION ANGLE:

pcc	80%			70%			50%			30%			10%			0
pw	50%	30%	10%	50%	30%	10%	50%	30%	10%	50%	30%	10%	50%	30%	10%	0
pfc	20%			20%			20%			20%			20%			0
RCR	RCR:Room Cavity Ratio						Wall Exitance Coefficients(WEC)									
0.0																
1.0	.329	.187	.059	.320	.182	.058	.302	.174	.055	.286	.165	.053	.272	.157	.051	
2.0	.302	.165	.051	.293	.162	.050	.278	.154	.048	.263	.148	.046	.250	.141	.045	
3.0	.276	.147	.044	.268	.144	.043	.254	.138	.042	.242	.132	.041	.230	.127	.039	
4.0	.253	.131	.039	.246	.129	.038	.234	.124	.037	.222	.119	.036	.211	.115	.035	
5.0	.233	.119	.034	.227	.116	.034	.215	.112	.033	.205	.108	.032	.195	.104	.031	
6.0	.215	.108	.031	.210	.106	.030	.199	.102	.030	.190	.099	.029	.181	.095	.028	
7.0	.200	.099	.028	.195	.097	.028	.186	.094	.027	.177	.091	.026	.169	.088	.026	
8.0	.186	.091	.026	.182	.089	.025	.173	.087	.025	.165	.084	.024	.158	.081	.024	
9.0	.174	.084	.024	.170	.083	.023	.162	.080	.023	.155	.078	.022	.149	.075	.022	
10.0	.163	.078	.022	.160	.077	.022	.153	.075	.021	.146	.073	.021	.140	.070	.020	

pcc	80%			70%			50%			30%			10%			0
pw	50%	30%	10%	50%	30%	10%	50%	30%	10%	50%	30%	10%	50%	30%	10%	0
pfc	20%			20%			20%			20%			20%			0
RCR	RCR:Room Cavity Ratio						Ceiling Cavity Exitance Coefficients(CCEC)									
0.0	.246	.246	.246	.210	.210	.210	.143	.143	.143	.082	.082	.082	.026	.026	.026	
1.0	.237	.211	.188	.203	.182	.162	.139	.125	.112	.080	.072	.065	.026	.023	.021	
2.0	.229	.188	.153	.197	.162	.132	.135	.112	.092	.078	.065	.054	.025	.021	.018	
3.0	.222	.171	.130	.190	.147	.112	.131	.102	.079	.075	.060	.046	.024	.019	.015	
4.0	.214	.158	.114	.184	.136	.099	.126	.095	.070	.073	.056	.041	.024	.018	.014	
5.0	.207	.147	.103	.178	.127	.090	.122	.089	.064	.071	.052	.038	.023	.017	.012	
6.0	.200	.139	.096	.171	.120	.083	.118	.084	.059	.069	.050	.035	.022	.016	.012	
7.0	.193	.132	.090	.166	.115	.078	.114	.080	.056	.067	.047	.033	.021	.016	.011	
8.0	.186	.127	.086	.160	.110	.075	.111	.077	.053	.065	.045	.032	.021	.015	.010	
9.0	.180	.122	.082	.155	.106	.072	.107	.074	.051	.063	.044	.030	.020	.014	.010	
10.0	.174	.118	.080	.150	.102	.070	.104	.072	.049	.061	.042	.029	.020	.014	.010	

C Range: 0 - 360DEG  
 C Interval: 30.0DEG  
 Test Speed: HIGH  
 Temperature:25.3DEG  
 Operators:DAMIN  
 Test Date:2018-06-25

γ Range: 0 - 180DEG  
 γ Interval: 1.0DEG  
 Test System:EVERFINE GO-2000A\_V1 SYSTEM V2.0.276  
 Humidity:65.0%  
 Test Distance:9.600m [K=1.0000]  
 Remarks:

Uncorrected UGR Table

Test:U:230.5V I:0.1080A P:24.20W PF:0.9660 Lamp Flux:2440.89x1 lm										
NAME: 136-305_25W_5700K					TYPE:25W			WEIGHT:		
DIM.:					SPEC.:5700K			SERIAL No.:1		
MFR.: Tronix Lighting					SUR.:0.0708			PROTECTION ANGLE:		
ceiling/cavity	0.7	0.7	0.5	0.5	0.3	0.7	0.7	0.5	0.5	0.3
walls	0.5	0.3	0.5	0.3	0.3	0.5	0.3	0.5	0.3	0.3
working plane	0.2	0.2	0.2	0.2	0.2	0.2	0.2	0.2	0.2	0.2
Room dimensions	Viewed crosswise					Viewed endwise				
x = 2H y = 2H	21.6	23.1	22.0	23.4	23.8	20.4	21.9	20.8	22.2	22.5
3H	23.7	25.0	24.1	25.4	25.7	21.9	23.2	22.3	23.6	24.0
4H	24.7	25.9	25.1	26.3	26.7	22.4	23.7	22.8	24.1	24.5
6H	25.6	26.8	26.0	27.2	27.6	22.8	23.9	23.2	24.3	24.8
8H	26.1	27.2	26.5	27.6	28.1	22.8	24.0	23.3	24.4	24.8
12H	26.6	27.7	27.0	28.1	28.6	22.8	23.9	23.3	24.4	24.8
4H 2H	22.2	23.5	22.6	23.8	24.3	21.3	22.6	21.7	22.9	23.3
3H	24.5	25.6	24.9	26.0	26.4	23.0	24.1	23.4	24.5	25.0
4H	25.6	26.6	26.1	27.1	27.6	23.7	24.7	24.2	25.1	25.6
6H	26.8	27.7	27.3	28.1	28.7	24.2	25.1	24.7	25.6	26.1
8H	27.3	28.2	27.8	28.7	29.2	24.3	25.2	24.8	25.7	26.2
12H	27.9	28.7	28.5	29.2	29.8	24.4	25.2	24.9	25.7	26.2
8H 4H	25.9	26.7	26.4	27.2	27.8	24.3	25.1	24.8	25.6	26.1
6H	27.3	28.0	27.8	28.5	29.1	25.0	25.7	25.6	26.2	26.8
8H	28.0	28.6	28.6	29.2	29.8	25.3	25.9	25.9	26.5	27.1
12H	28.8	29.4	29.4	29.9	30.6	25.5	26.0	26.1	26.6	27.2
12H 4H	25.9	26.7	26.4	27.2	27.8	24.4	25.2	24.9	25.7	26.2
6H	27.4	28.0	27.9	28.5	29.1	25.3	25.9	25.8	26.4	27.0
8H	28.2	28.7	28.8	29.3	29.9	25.6	26.2	26.2	26.7	27.4
Variations with the observer position at spacings:										
S = 1.0H	+ 0.1 / - 0.1					+ 0.1 / - 0.2				
1.5H	+ 0.2 / - 0.3					+ 0.2 / - 0.4				
2.0H	+ 0.2 / - 0.3					+ 0.2 / - 0.5				

CIE Pub.117 Corrected 2441 lm Total Lamp Luminous Flux.(8log(F/F0) = 3.1)

C Range: 0 - 360DEG  
 C Interval: 30.0DEG  
 Test Speed: HIGH  
 Temperature:25.3DEG  
 Operators:DAMIN  
 Test Date:2018-06-25

γ Range: 0 - 180DEG  
 γ Interval: 1.0DEG  
 Test System:EVERFINE GO-2000A\_V1 SYSTEM V2.0.276  
 Humidity:65.0%  
 Test Distance:9.600m [K=1.0000]  
 Remarks:

**UTILIZATION FACTORS TABLE**

Test:U:230.5V I:0.1080A P:24.20W PF:0.9660 Lamp Flux:2440.89x1 lm		
NAME: 136-305_25W_5700K	TYPE:25W	WEIGHT:
DIM.:	SPEC.:5700K	SERIAL No.:1
MFR.: Tronix Lighting	SUR.:0.0708	PROTECTION ANGLE:

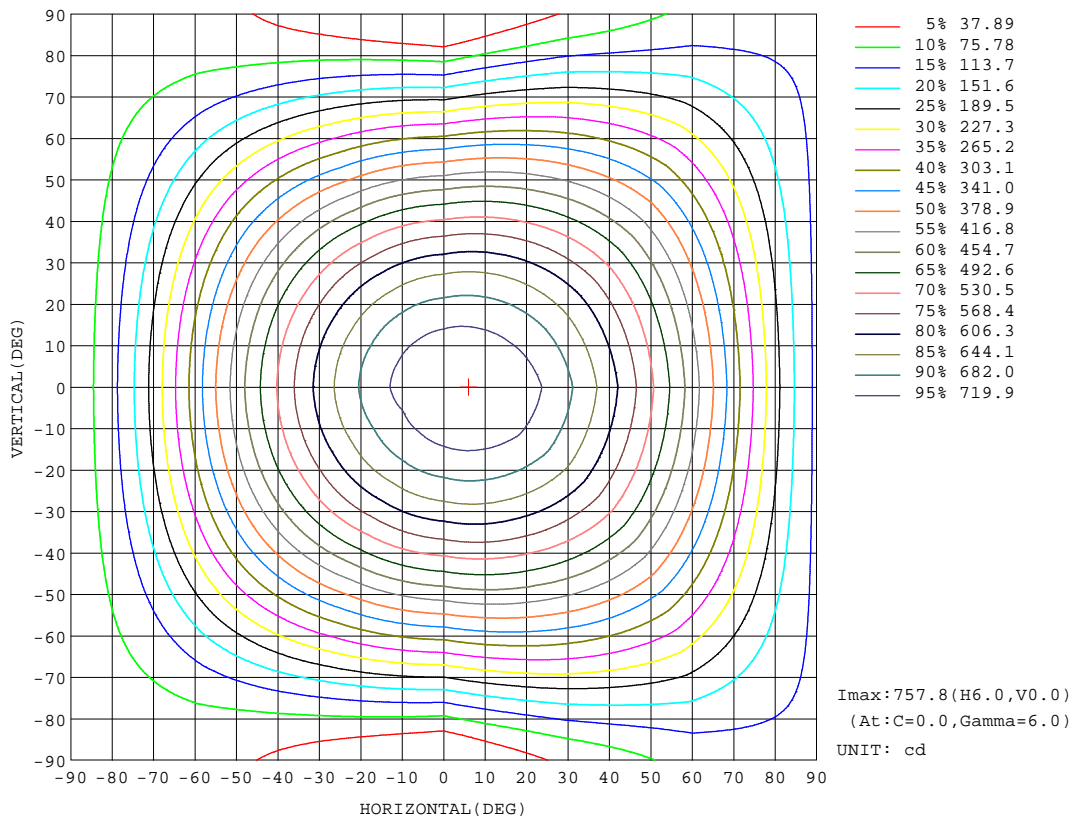
REFLECTANCE										
Ceiling	0.8	0.8	0.8	0.7	0.7	0.7	0.5	0.5	0.5	0
Walls	0.7	0.5	0.3	0.7	0.5	0.3	0.7	0.5	0.3	0
Working plane	0.2	0.2	0.2	0.2	0.2	0.2	0.2	0.2	0.2	0
ROOM INDEX	UTILIZATION FACTORS(PERCENT) k(RI) x RCR = 5									
k = 0.60	54	42	35	53	42	35	52	41	35	28
0.80	64	52	44	63	51	44	60	50	44	36
1.00	72	61	53	71	60	53	68	61	52	44
1.25	79	68	61	77	67	60	74	65	59	51
1.50	84	74	66	82	72	65	78	70	64	55
2.00	91	82	75	89	80	74	85	77	72	62
2.50	95	87	80	93	85	79	88	82	76	66
3.00	99	91	85	96	89	84	91	85	81	70
4.00	103	97	91	100	94	90	95	90	86	75
5.00	106	100	96	103	98	93	97	93	89	78
ROOM INDEX	UF(total)									Direct
According to DIN EN 13032-2 2004			Suspended				SHRNOM = 1.25			

C Range: 0 - 360DEG  
 C Interval: 30.0DEG  
 Test Speed: HIGH  
 Temperature:25.3DEG  
 Operators:DAMIN  
 Test Date:2018-06-25

γ Range: 0 - 180DEG  
 γ Interval: 1.0DEG  
 Test System:EVERFINE GO-2000A\_V1 SYSTEM V2.0.276  
 Humidity:65.0%  
 Test Distance:9.600m [K=1.0000]  
 Remarks:

ISOCANDELA DIAGRAM

Test:U:230.5V I:0.1080A P:24.20W PF:0.9660 Lamp Flux:2440.89x1 lm		
NAME: 136-305_25W_5700K	TYPE:25W	WEIGHT:
DIM.:	SPEC.:5700K	SERIAL No.:1
MFR.: Tronix Lighting	SUR.:0.0708	PROTECTION ANGLE:



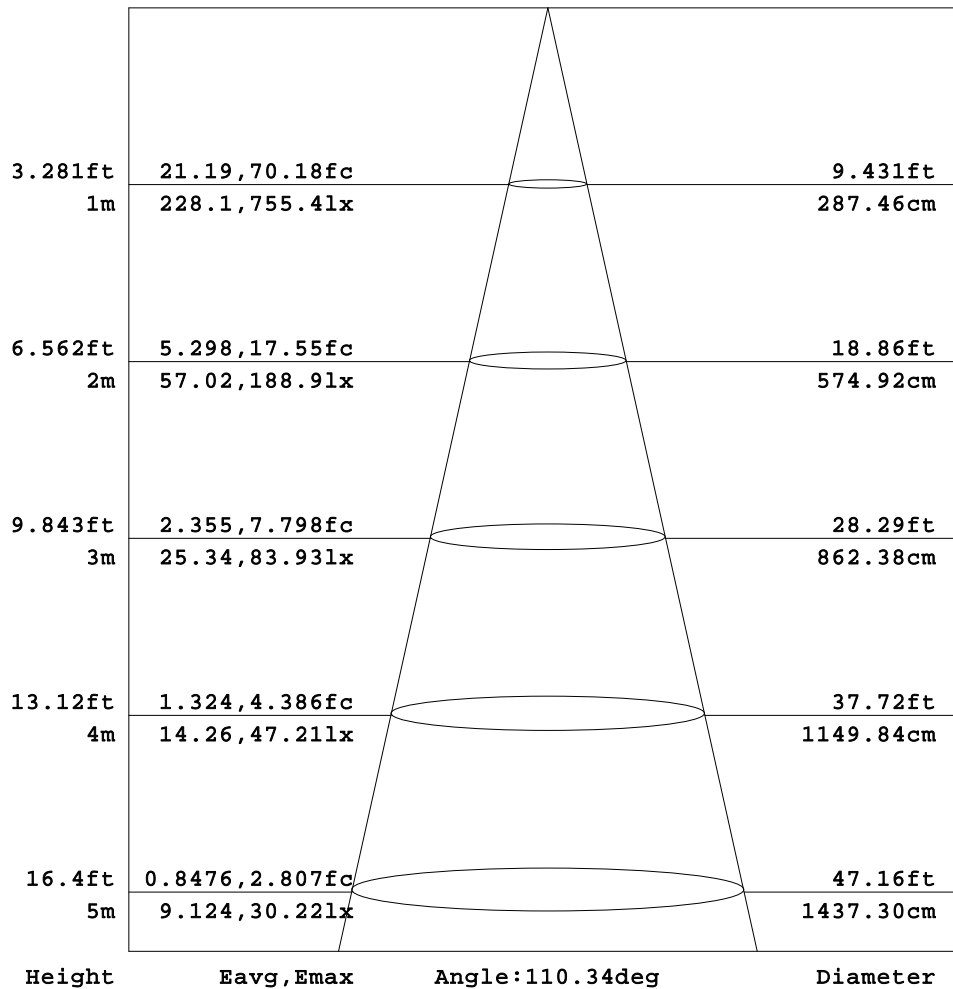
C Range: 0 - 360DEG  
 C Interval: 30.0DEG  
 Test Speed: HIGH  
 Temperature:25.3DEG  
 Operators:DAMIN  
 Test Date:2018-06-25

γ Range: 0 - 180DEG  
 γ Interval: 1.0DEG  
 Test System:EVERFINE GO-2000A\_V1 SYSTEM V2.0.276  
 Humidity:65.0%  
 Test Distance:9.600m [K=1.0000]  
 Remarks:

AAI Figure

Test:U:230.5V I:0.1080A P:24.20W PF:0.9660 Lamp Flux:2440.89x1 lm		
NAME: 136-305_25W_5700K	TYPE:25W	WEIGHT:
DIM.:	SPEC.:5700K	SERIAL No.:1
MFR.: Tronix Lighting	SUR.:0.0708	PROTECTION ANGLE:

Flux out:1575 lm



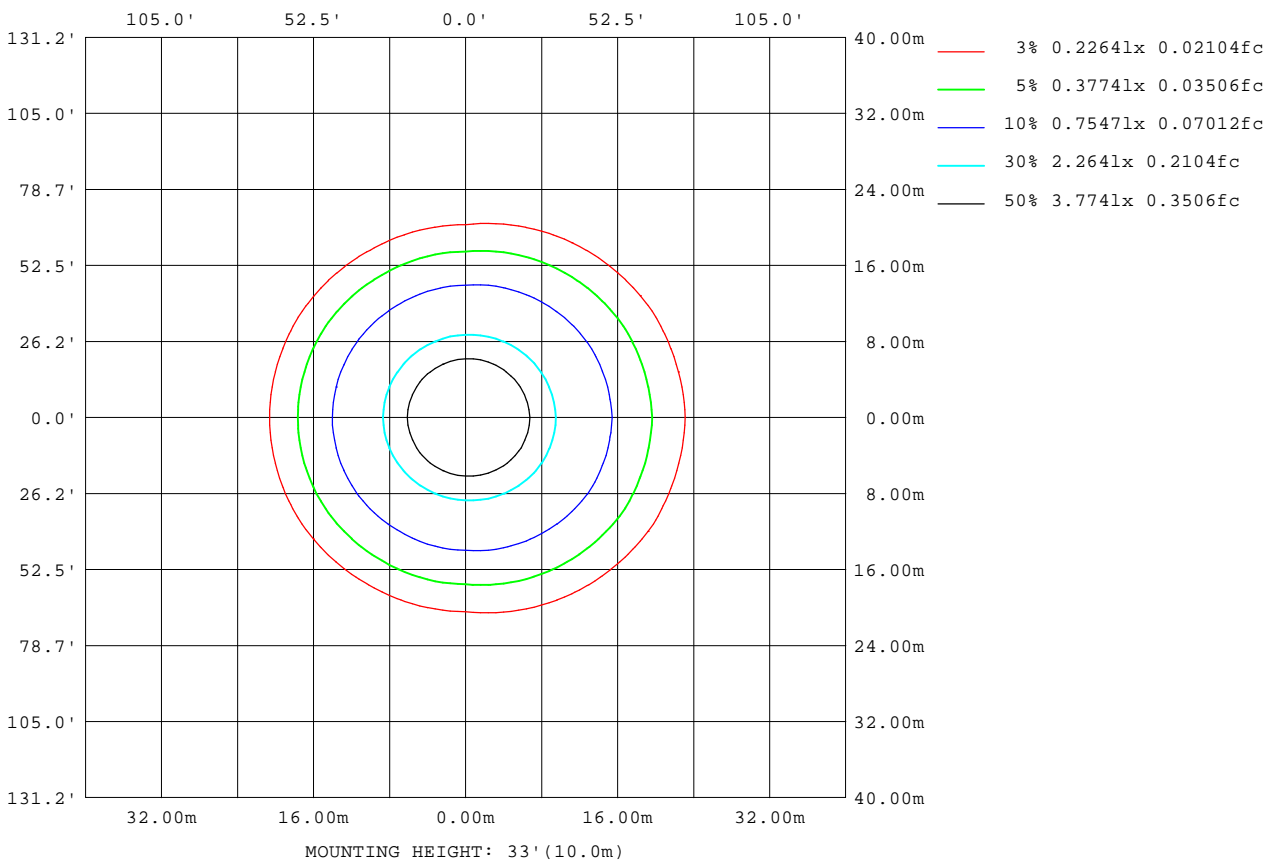
Note: The Curves indicate the illuminated area and the average illumination when the luminaire is at different distance.

C Range: 0 - 360DEG  
 C Interval: 30.0DEG  
 Test Speed: HIGH  
 Temperature: 25.3DEG  
 Operators: DAMIN  
 Test Date: 2018-06-25

γ Range: 0 - 180DEG  
 γ Interval: 1.0DEG  
 Test System: EVERFINE GO-2000A\_V1 SYSTEM V2.0.276  
 Humidity: 65.0%  
 Test Distance: 9.600m [K=1.0000]  
 Remarks:

ISOLUX DIAGRAM

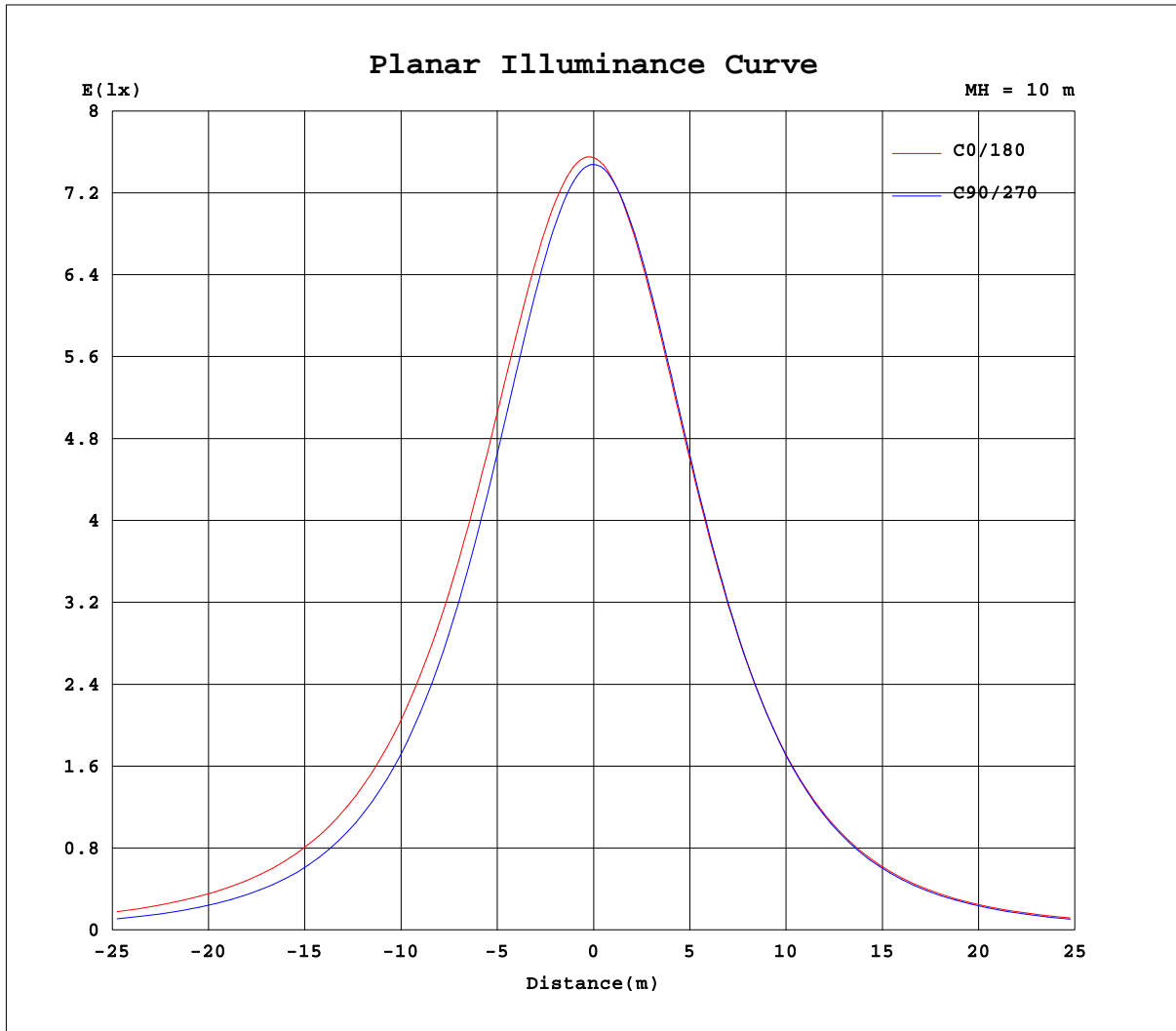
Test:U:230.5V I:0.1080A P:24.20W PF:0.9660 Lamp Flux:2440.89x1 lm		
NAME: 136-305_25W_5700K	TYPE:25W	WEIGHT:
DIM.:	SPEC.:5700K	SERIAL No.:1
MFR.: Tronix Lighting	SUR.:0.0708	PROTECTION ANGLE:



C Range: 0 - 360DEG  
 C Interval: 30.0DEG  
 Test Speed: HIGH  
 Temperature:25.3DEG  
 Operators:DAMIN  
 Test Date:2018-06-25

γ Range: 0 - 180DEG  
 γ Interval: 1.0DEG  
 Test System:EVERFINE GO-2000A\_V1 SYSTEM V2.0.276  
 Humidity:65.0%  
 Test Distance:9.600m [K=1.0000]  
 Remarks:

Planar Illuminance Curve



C Range: 0 - 360DEG  
 C Interval: 30.0DEG  
 Test Speed: HIGH  
 Temperature: 25.3DEG  
 Operators: DAMIN  
 Test Date: 2018-06-25

$\gamma$  Range: 0 - 180DEG  
 $\gamma$  Interval: 1.0DEG  
 Test System: EVERFINE GO-2000A\_V1 SYSTEM V2.0.276  
 Humidity: 65.0%  
 Test Distance: 9.600m [K=1.0000]  
 Remarks:

LUMINOUS DISTRIBUTION INTENSITY DATA

Test:U:230.5V I:0.1080A P:24.20W PF:0.9660 Lamp Flux:2440.89x1 lm		
NAME: 136-305_25W_5700K	TYPE:25W	WEIGHT:
DIM.:	SPEC.:5700K	SERIAL No.:1
MFR.: Tronix Lighting	SUR.:0.0708	PROTECTION ANGLE:

Table--1

UNIT: cd

C(DEC) γ (DEC)	0	30	60	90	120	150	180	210	240	270	300	330						
0	749	749	749	749	749	749	749	749	749	749	749	749						
5	752	752	749	747	744	742	741	741	743	746	749	751						
10	750	748	742	736	731	728	726	728	731	735	742	748						
15	743	739	728	719	711	708	706	707	711	717	728	738						
20	729	724	708	694	686	682	680	681	685	692	707	722						
25	709	703	682	663	654	651	649	649	653	661	680	700						
30	684	675	649	627	616	615	613	613	615	624	648	672						
35	653	643	612	585	574	574	573	571	573	582	610	639						
40	617	605	569	538	527	529	529	526	525	535	567	601						
45	577	564	523	488	477	482	482	478	474	484	520	559						
50	533	518	473	434	423	430	431	426	420	429	470	514						
55	485	468	420	376	367	376	377	372	362	371	417	464						
60	433	416	365	316	310	318	318	315	305	309	360	411						
65	377	359	308	253	251	260	260	257	246	246	303	356						
70	319	301	249	190	191	202	202	198	187	180	244	297						
75	260	241	189	127	134	146	147	141	130	117	185	237						
80	201	183	132	68.2	82.1	98.2	103	94.6	78.6	58.8	127	178						
85	147	129	80.3	21.8	43.5	65.8	73.0	63.5	41.6	15.8	75.4	125						
90	105	88.6	44.8	1.96	26.4	49.4	57.5	48.4	25.7	1.01	41.0	85.5						
95	79.2	64.8	30.6	1.10	22.8	44.2	52.2	43.8	22.5	1.17	28.4	63.0						
100	66.3	55.0	27.9	1.94	21.4	42.1	50.0	41.9	21.2	2.13	23.9	53.9						
105	61.7	52.0	26.7	3.04	20.2	40.2	47.8	40.1	20.3	3.23	23.2	51.1						
110	59.0	49.8	25.4	4.26	19.2	38.3	45.5	38.1	19.6	4.41	24.2	49.0						
115	56.2	47.5	24.3	5.31	18.3	36.2	43.1	36.2	18.9	5.59	23.8	46.8						
120	53.2	45.1	22.8	6.20	17.6	34.0	40.5	34.1	18.2	6.43	23.0	44.5						
125	50.0	42.6	20.8	7.00	17.0	31.9	37.8	32.0	17.6	7.22	21.2	42.1						
130	46.7	40.1	19.1	7.73	16.5	29.7	35.1	29.9	17.0	8.01	19.7	39.5						
135	43.4	36.8	17.8	8.44	16.0	27.4	32.2	27.6	16.4	8.66	18.4	31.0						
140	40.0	32.2	16.6	9.05	15.4	25.2	29.4	25.4	15.6	9.28	17.2	29.6						
145	36.6	27.7	15.6	9.58	14.9	23.0	26.5	23.1	14.9	9.82	16.1	27.4						
150	33.2	23.8	14.7	10.0	14.2	20.8	23.7	20.9	14.1	10.3	15.1	24.2						
155	29.9	20.5	13.8	10.4	14.0	18.6	20.8	18.7	13.8	10.7	14.1	20.8						
160	26.5	17.6	13.0	11.4	13.8	16.4	18.1	16.5	13.7	11.6	13.3	18.0						
165	23.2	15.3	12.8	12.3	13.9	14.9	15.6	14.8	13.7	12.5	13.0	15.6						
170	20.0	13.5	13.3	13.2	13.7	13.9	13.8	13.6	13.7	13.4	13.5	13.9						
175	16.6	12.0	13.8	14.0	13.8	13.1	11.7	12.7	14.0	14.1	13.9	12.5						
180	12.7	12.0	14.3	14.6	14.2	12.8	12.7	12.0	14.3	14.5	14.2	12.8						

C Range: 0 - 360DEG  
 C Interval: 30.0DEG  
 Test Speed: HIGH  
 Temperature:25.3DEG  
 Operators:DAMIN  
 Test Date:2018-06-25

γ Range: 0 - 180DEG  
 γ Interval: 1.0DEG  
 Test System:EVERFINE GO-2000A\_V1 SYSTEM V2.0.276  
 Humidity:65.0%  
 Test Distance:9.600m [K=1.0000]  
 Remarks: