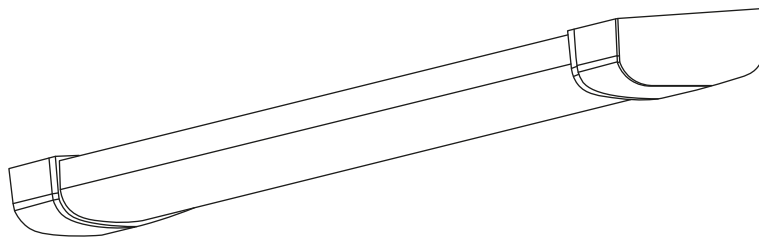




Read these instructions & save for future use

## Batten light flat | 1200mm | 30W | IP20 | tri-white



Article number **136-311**

Brand **Tronix Lighting**

Type **Industrial lighting**

Contents of this product **1x 30W batten light tri-white**

Technical datasheet **Digitally available  
on our webshop**



*View instructions and  
technical data also on  
our website*

**TRONIX**



## Before first use

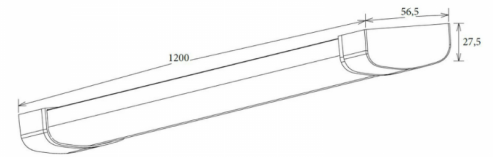
Before getting started with this product, it is advisable to check the order completeness and any damage. If this is the case, please contact Tronix Lighting.

## Description

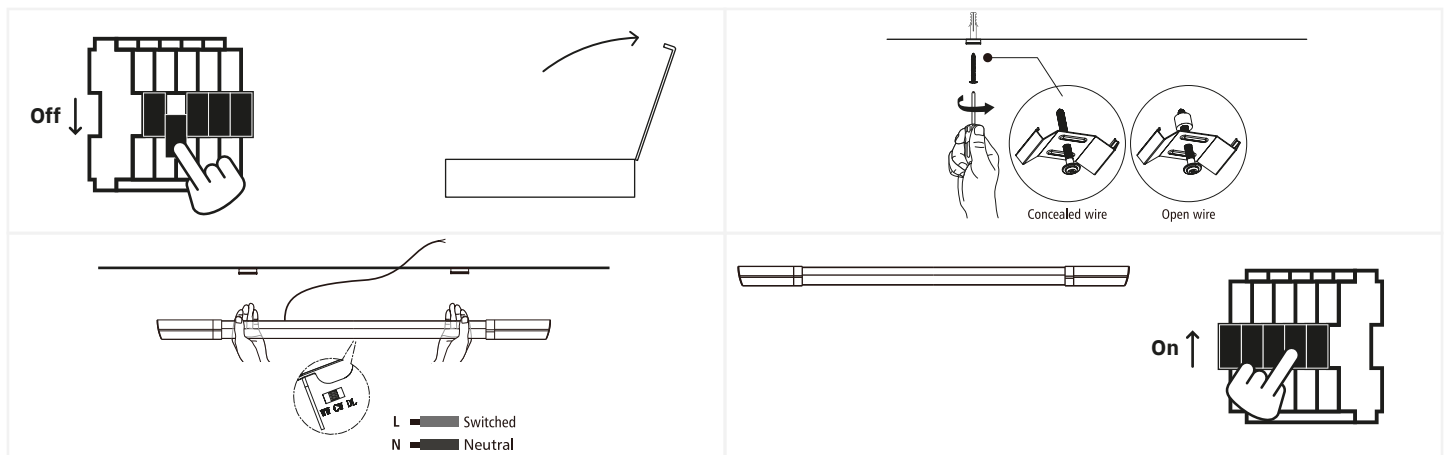
This Batten Light with integrated LEDs is the replacement for traditional fluorescent fixtures. The Batten Light is easy to set in the color temperatures 3000K, 4000K or 5700K. This functionality makes the Batten Light very widely applicable. It is not only suitable for (parking) garages, barns or warehouses, but also for general lighting in business premises, offices or schools.

### Features

- Adjustable by means of a CCT switch on the side of the fixture, available in 3000K, 4000K and 5700K;
- Connection at the rear (ceiling side) of the fixture by means of a 60 cm connection cord.



## Installation



1. Turn off the power and remove the product and associated parts from the packaging...;
2. Place the supplied clamps on the ceiling. Depending on the wiring, you can choose a "flat" installation or a small space between the ceiling and the lamp;
3. Connect the wiring to the rod and select the desired light color. Then place the lamp on the terminals and secure it where necessary;
4. Check the installation and activate the power when it is OK.



## Safety

Safety is a top priority at Tronix Lighting. Therefore, we heartily recommend that you follow the following steps closely:

- Keep this manual carefully for future reference;
- Choose a qualified electrician while installing, maintaining or inspecting this product;
- Never look directly into a light source to avoid possible damage to the eye;
- Always ensure that the relevant power group is on non-active when the product is connected;
- Use only recommended combinations (LED drivers, controllers or dimmers) to avoid injury or damage to the product.

## Technical problems and repair

Should a product not work properly after installation, or if the product exhibits problems over time, it is advisable to check the following elements:

- Check the wiring and installation of your product;
- Check for the presence of interfering elements such as dust, water or other electronics;
- If possible, try disconnecting the product and testing it in another location to rule out a problem at the location;
- Should you be dealing with a WIFI-based product, check and reset your router's settings.

Should the product still not work after testing, it is recommended to send it in for inspection and/or repair. To do so, please contact Tronix Lighting using nearby details and proof of purchase (packing slip).



CARE



SHARE



CONNECT

### Supplier:

Tronix Lighting B.V

Vluchtoord 41  
5406 XP Uden, Netherlands

+31 (0)413 330 380  
sales@tronixlighting.com

## Terms and symbols (as relevant to product)



The **CE mark** indicates that this product complies with EU regulations on safety, health and environmental protection;



The **WEEE symbol** stands for "Waste Electrical and Electronic Equipment Regulation," a directive on the collection, recycling and recovery of electronic waste;



The **Class II symbol** indicates that this product is double insulated;

- The product is rated **IP20**. This means that the product is resistant to the penetration of solid objects >12.5 mm and is not resistant to water or moisture.