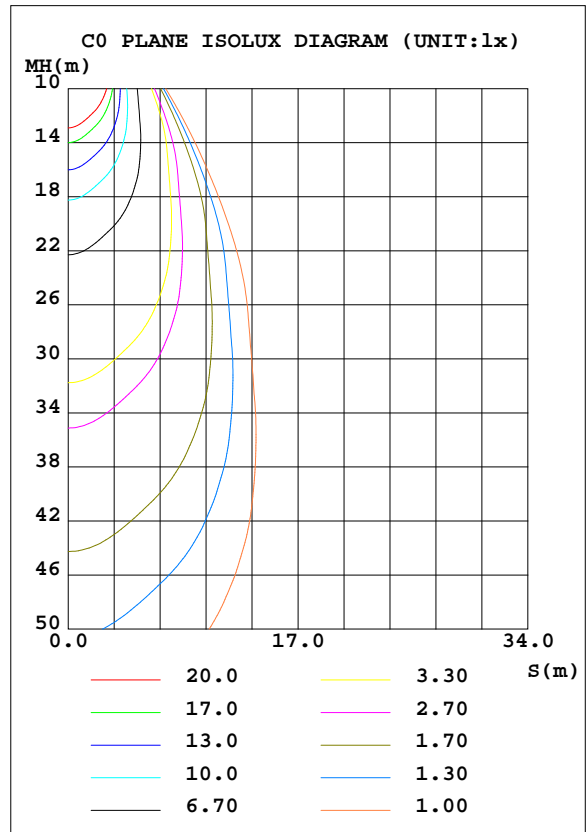
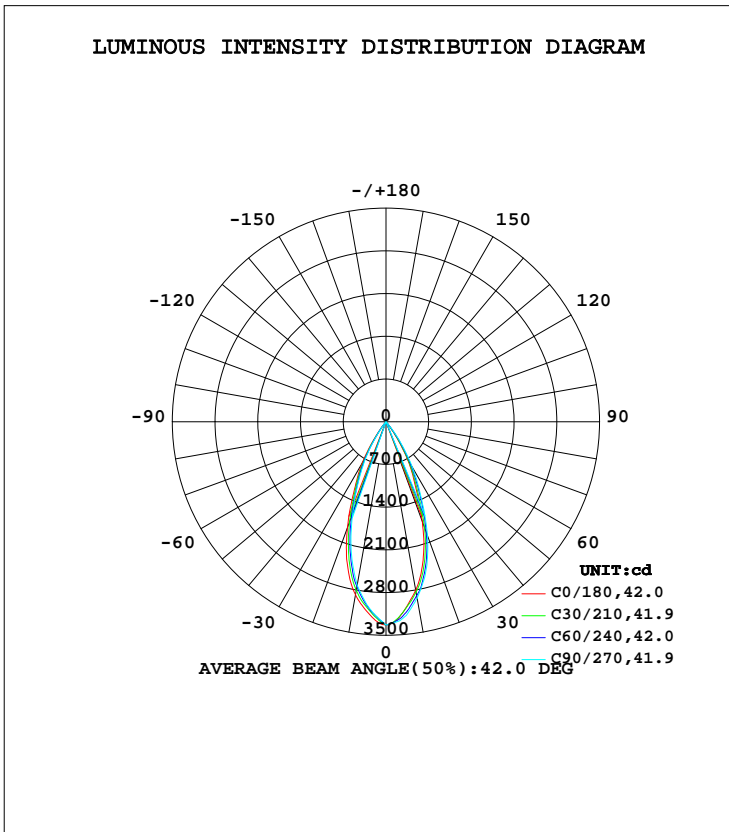


LUMINAIRE PHOTOMETRIC TEST REPORT

Test:U:230.49V I:0.0949A P:19.999W PF:0.9145 Freq:50.00Hz Lamp Flux:1705.79x1 lm		
NAME: 169-290	TYPE:	WEIGHT:
SPEC.:	DIM.:	SERIAL No.:
MFR.: Tronix Lighting	SUR.:75	Shielding Angle:

DATA OF LAMP		PHOTOMETRIC DATA Eff: 85.29 lm/W			
MODEL	169-290	Imax(cd)	3331	S/MH(C0/180)	0.69
NOMINAL POWER(W)	20	LOR(%)	100.0	S/MH(C90/270)	0.63
RATED VOLTAGE(V)	230	TOTAL FLUX(lm)	1705.8	η UP, DN(C0-180)	0.0,53.4
NOMINAL FLUX(lm)	1705.79	CIE CLASS	DIRECT	η UP, DN(C180-360)	0.0,46.6
LAMPS INSIDE	1	η up(%)	0.0	CIBSE SHR NOM	0.50
TEST VOLTAGE(V)	230	η down(%)	100.0	CIBSE SHR MAX	0.70



V(B) Range:-85 - 85DEG
 V(B) Interval: 2.0DEG
 Test System:EVERFINE GO-2000B_V1 SYSTEM V2.0.404.7
 Humidity:65.0%
 Test Distance:8.240m [K=1.0000]
 Remarks: 169-290

ZONAL FLUX DIAGRAM

ZONAL FLUX DIAGRAM:

γ	C0	C45	C90	C135	C180	C225	C270	C315	γ	Φ zone	Φ total	%lum,lamp
10	2805	2862	2936	2932	2882	2770	2722	2708	0- 10	289.4	289.4	17,17
20	1740	1884	1992	1956	1854	1699	1591	1601	10- 20	650.1	939.5	55.1,55.1
30	689.7	772.9	873.0	853.0	782.6	669.7	612.9	615.1	20- 30	548.4	1488	87.2,87.2
40	28.42	48.98	62.13	70.40	45.51	32.27	23.61	23.56	30- 40	195.4	1683	98.7,98.7
50	6.421	6.637	7.448	7.362	7.365	7.217	6.777	6.376	40- 50	12.50	1696	99.4,99.4
60	3.057	3.476	4.329	3.962	3.494	3.495	3.197	3.091	50- 60	4.451	1700	99.7,99.7
70	1.480	2.311	3.138	2.803	1.644	1.518	1.316	1.418	60- 70	2.608	1703	99.8,99.8
80	1.010	2.037	2.535	2.342	0.9156	0.9489	0.9109	0.9760	70- 80	1.709	1705	99.9,99.9
90	0.0644	0	0	0	0.1748	0	0	0	80- 90	1.096	1706	100,100
100									90-100			
110									100-110			
120									110-120			
130									120-130			
140									130-140			
150									140-150			
160									150-160			
170									160-170			
180									170-180			
DEG	LUMINOUS INTENSITY:cd									UNIT:lm		

Conical surface Flux(90deg): 1692.2 lm

%lum = 99.2%
%lamp = 99.2%

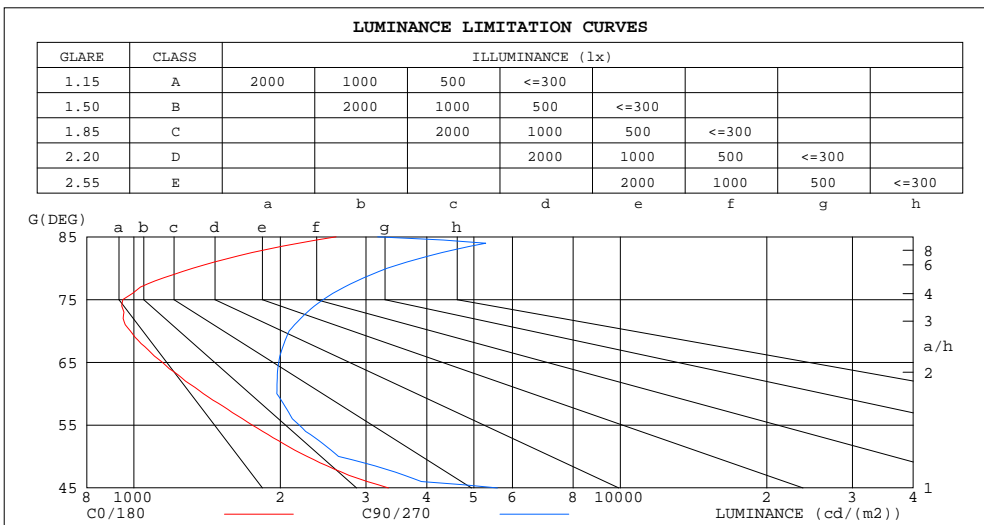
Conical surface Flux(120deg): 1700.4 lm

%lum = 99.7%
%lamp = 99.7%

V(B) Range:-85 - 85DEG
V(B) Interval: 2.0DEG
Test System:EVERFINE GO-2000B_V1 SYSTEM V2.0.404.7
Humidity:65.0%
Test Distance:8.240m [K=1.0000]
Remarks: 169-290

LUMINANCE LIMITATION CURVES

Test:U:230.49V I:0.0949A P:19.999W PF:0.9145 Freq:50.00Hz Lamp Flux:1705.79x1 lm		
NAME: 169-290	TYPE:	WEIGHT:
SPEC.:	DIM.:	SERIAL No.:
MFR.: Tronix Lighting	SUR.:75	Shielding Angle:



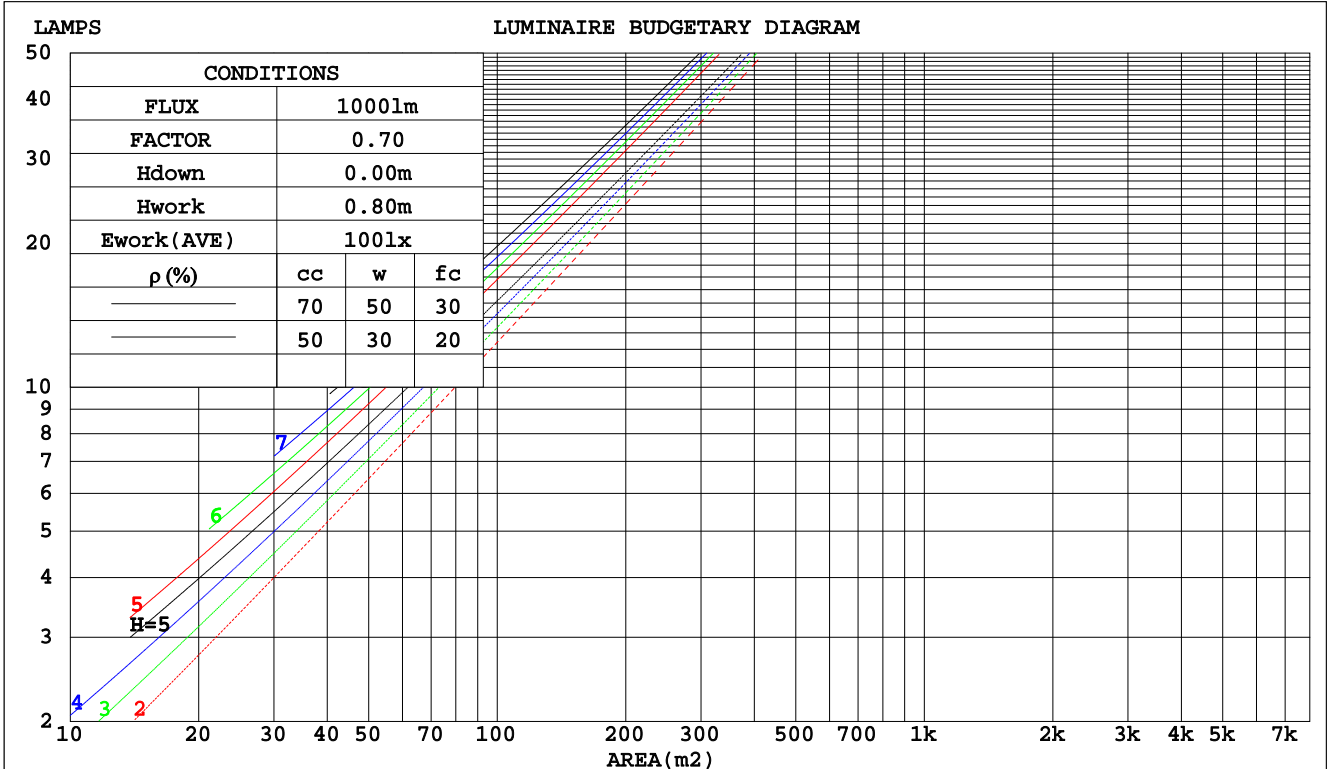
LUMINANCE cd/(m2)		
G(DEG)	C0/180	C90/270
85	2603	3171
80	1322	3318
75	949	2450
70	984	2085
65	1145	1985
60	1390	1968
55	1751	2188
50	2270	2634
45	3335	5589

V(B) Range:-85 - 85DEG
V(B) Interval: 2.0DEG
Test System:EVERFINE GO-2000B_V1 SYSTEM V2.0.404.7
Humidity:65.0%
Test Distance:8.240m [K=1.0000]
Remarks: 169-290

CU AND LUMINAIRE BUDGETARY ESTIMATE DIAGRAM

Test:U:230.49V I:0.0949A P:19.999W PF:0.9145 Freq:50.00Hz Lamp Flux:1705.79x1 lm		
NAME: 169-290	TYPE:	WEIGHT:
SPEC.:	DIM.:	SERIAL No.:
MFR.: Tronix Lighting	SUR.:75	Shielding Angle:

pcc	80%			70%			50%			30%			10%			0
	50%	30%	10%	50%	30%	10%	50%	30%	10%	50%	30%	10%	50%	30%	10%	0
pw																0
pfc	20%			20%			20%			20%			20%			0
RCR	RCR:Room Cavity Ratio Coefficients of Utilization(CU)															
0.0	1.19	1.19	1.19	1.16	1.16	1.16	1.11	1.11	1.11	1.06	1.06	1.06	1.02	1.02	1.02	.00
1.0	1.12	1.10	1.08	1.10	1.08	1.06	1.06	1.04	1.03	1.02	1.01	.00	.98	.98	.97	.95
2.0	1.05	1.02	.99	1.04	1.00	.98	1.00	.98	.95	.97	.95	.93	.95	.93	.92	.90
3.0	.99	.95	.92	.98	.94	.91	.95	.92	.89	.93	.90	.88	.91	.89	.87	.85
4.0	.94	.89	.86	.93	.89	.85	.91	.87	.84	.89	.86	.83	.87	.85	.82	.81
5.0	.89	.84	.81	.88	.84	.80	.87	.83	.79	.85	.82	.79	.84	.81	.78	.77
6.0	.85	.80	.76	.84	.79	.76	.83	.78	.75	.81	.78	.75	.80	.77	.74	.73
7.0	.81	.76	.72	.80	.75	.72	.79	.75	.72	.78	.74	.71	.77	.73	.71	.70
8.0	.77	.72	.68	.77	.72	.68	.76	.71	.68	.75	.71	.68	.74	.70	.68	.66
9.0	.74	.69	.65	.73	.68	.65	.72	.68	.65	.72	.68	.65	.71	.67	.65	.63
10.0	.71	.66	.62	.70	.65	.62	.69	.65	.62	.69	.65	.62	.68	.64	.62	.61



V(B) Range:-85 - 85DEG
V(B) Interval: 2.0DEG
Test System:EVERFINE GO-2000B_V1 SYSTEM V2.0.404.7
Humidity:65.0%
Test Distance:8.240m [K=1.0000]
Remarks: 169-290

WEC AND CCEC

Test:U:230.49V I:0.0949A P:19.999W PF:0.9145 Freq:50.00Hz Lamp Flux:1705.79x1 lm		
NAME: 169-290	TYPE:	WEIGHT:
SPEC.:	DIM.:	SERIAL No.:
MFR.: Tronix Lighting	SUR.:75	Shielding Angle:

ρcc	80%			70%			50%			30%			10%			0
ρw	50%	30%	10%	50%	30%	10%	50%	30%	10%	50%	30%	10%	50%	30%	10%	0
ρfc	20%			20%			20%			20%			20%			0
RCR	RCR:Room Cavity Ratio						Wall Exitance Coefficients(WEC)									
0.0																
1.0	.159	.091	.029	.153	.087	.028	.140	.080	.026	.129	.074	.024	.118	.068	.022	
2.0	.150	.082	.025	.145	.080	.025	.134	.075	.023	.125	.070	.022	.116	.065	.021	
3.0	.142	.076	.023	.137	.073	.022	.128	.070	.021	.120	.066	.020	.113	.062	.019	
4.0	.135	.070	.021	.131	.068	.020	.123	.065	.019	.116	.062	.019	.110	.060	.018	
5.0	.128	.065	.019	.125	.064	.019	.118	.061	.018	.112	.059	.018	.106	.057	.017	
6.0	.122	.061	.018	.119	.060	.017	.113	.058	.017	.108	.056	.017	.103	.054	.016	
7.0	.117	.058	.016	.114	.057	.016	.109	.055	.016	.104	.054	.016	.100	.052	.015	
8.0	.112	.055	.015	.110	.054	.015	.105	.053	.015	.101	.051	.015	.097	.050	.015	
9.0	.107	.052	.015	.105	.051	.014	.101	.050	.014	.098	.049	.014	.094	.048	.014	
10.0	.103	.050	.014	.101	.049	.014	.098	.048	.013	.094	.047	.013	.091	.046	.013	

ρcc	80%			70%			50%			30%			10%			0
ρw	50%	30%	10%	50%	30%	10%	50%	30%	10%	50%	30%	10%	50%	30%	10%	0
ρfc	20%			20%			20%			20%			20%			0
RCR	RCR:Room Cavity Ratio						Ceiling Cavity Exitance Coefficients(CCEC)									
0.0	.190	.190	.190	.163	.163	.163	.111	.111	.111	.064	.064	.064	.020	.020	.020	
1.0	.170	.157	.146	.145	.135	.126	.099	.093	.087	.057	.054	.051	.018	.017	.016	
2.0	.153	.133	.115	.131	.114	.100	.090	.079	.069	.052	.046	.041	.017	.015	.013	
3.0	.140	.113	.092	.120	.098	.080	.082	.068	.056	.048	.040	.033	.015	.013	.011	
4.0	.129	.098	.075	.110	.085	.065	.076	.059	.046	.044	.035	.027	.014	.011	.009	
5.0	.119	.087	.062	.102	.075	.054	.071	.052	.038	.041	.031	.023	.013	.010	.007	
6.0	.111	.077	.052	.096	.067	.046	.066	.047	.032	.038	.027	.019	.012	.009	.006	
7.0	.104	.069	.044	.090	.060	.039	.062	.042	.027	.036	.025	.016	.012	.008	.005	
8.0	.099	.063	.038	.085	.054	.033	.059	.038	.024	.034	.023	.014	.011	.007	.005	
9.0	.093	.057	.033	.080	.050	.029	.056	.035	.020	.032	.021	.012	.011	.007	.004	
10.0	.089	.053	.029	.077	.046	.025	.053	.032	.018	.031	.019	.011	.010	.006	.004	

V(B) Range:-85 - 85DEG
V(B) Interval: 2.0DEG
Test System:EVERFINE GO-2000B_V1 SYSTEM V2.0.404.7
Humidity:65.0%
Test Distance:8.240m [K=1.0000]
Remarks: 169-290

UGR(Unified Glare Rating) Table

Test:U:230.49V I:0.0949A P:19.999W PF:0.9145 Freq:50.00Hz Lamp Flux:1705.79x1 lm										
NAME: 169-290					TYPE:			WEIGHT:		
SPEC.:					DIM.:			SERIAL No.:		
MFR.: Tronix Lighting					SUR.:75			Shielding Angle:		
ceiling/cavity	0.7	0.7	0.5	0.5	0.3	0.7	0.7	0.5	0.5	0.3
walls	0.5	0.3	0.5	0.3	0.3	0.5	0.3	0.5	0.3	0.3
working plane	0.2	0.2	0.2	0.2	0.2	0.2	0.2	0.2	0.2	0.2
Room dimensions	Viewed crosswise					Viewed endwise				
x = 2H y = 2H	16.4	17.2	16.6	17.3	17.5	18.4	19.2	18.6	19.3	19.5
3H	16.2	17.0	16.4	17.1	17.3	18.2	19.0	18.5	19.2	19.4
4H	16.1	16.8	16.4	17.0	17.3	18.2	18.9	18.4	19.1	19.3
6H	16.0	16.7	16.3	16.9	17.2	18.1	18.8	18.4	19.0	19.2
8H	16.0	16.6	16.3	16.9	17.2	18.1	18.7	18.4	19.0	19.2
12H	16.0	16.6	16.3	16.9	17.1	18.1	18.7	18.4	18.9	19.2
4H 2H	16.1	16.8	16.4	17.0	17.3	18.1	18.8	18.4	19.0	19.3
3H	16.0	16.6	16.3	16.8	17.1	18.0	18.6	18.3	18.9	19.1
4H	15.9	16.4	16.2	16.7	17.0	17.9	18.5	18.2	18.8	19.1
6H	15.8	16.3	16.2	16.6	17.0	17.9	18.4	18.2	18.7	19.0
8H	15.8	16.2	16.1	16.6	16.9	17.9	18.3	18.2	18.7	19.0
12H	15.7	16.2	16.1	16.5	16.9	17.9	18.3	18.3	18.6	19.0
8H 4H	15.7	16.2	16.1	16.5	16.9	17.8	18.2	18.2	18.6	18.9
6H	15.7	16.1	16.1	16.5	16.9	17.7	18.1	18.2	18.5	18.9
8H	15.7	16.0	16.1	16.4	16.9	17.7	18.1	18.2	18.5	18.9
12H	15.7	16.0	16.2	16.4	16.9	17.8	18.1	18.2	18.5	19.0
12H 4H	15.7	16.1	16.1	16.5	16.9	17.7	18.1	18.1	18.5	18.9
6H	15.6	16.0	16.1	16.4	16.8	17.7	18.0	18.1	18.4	18.9
8H	15.7	15.9	16.1	16.4	16.8	17.7	18.0	18.2	18.4	18.9
Variations with the observer position at spacings:										
S = 1.0H	+ 4.1 / - 4.3					+ 4.7 / - 6.8				
1.5H	+ 6.6 / - 4.0					+ 7.4 / - 6.7				
2.0H	+ 0.8 / - 0.4					+ 1.4 / - 0.4				

CIE Pub.117, 1706 lm Total Lamp Luminous Flux Corrected (8log(F/F0) = 1.9)

V(B) Range:-85 - 85DEG
V(B) Interval: 2.0DEG
Test System:EVERFINE GO-2000B_V1 SYSTEM V2.0.404.7
Humidity:65.0%
Test Distance:8.240m [K=1.0000]
Remarks: 169-290

UTILIZATION FACTORS TABLE

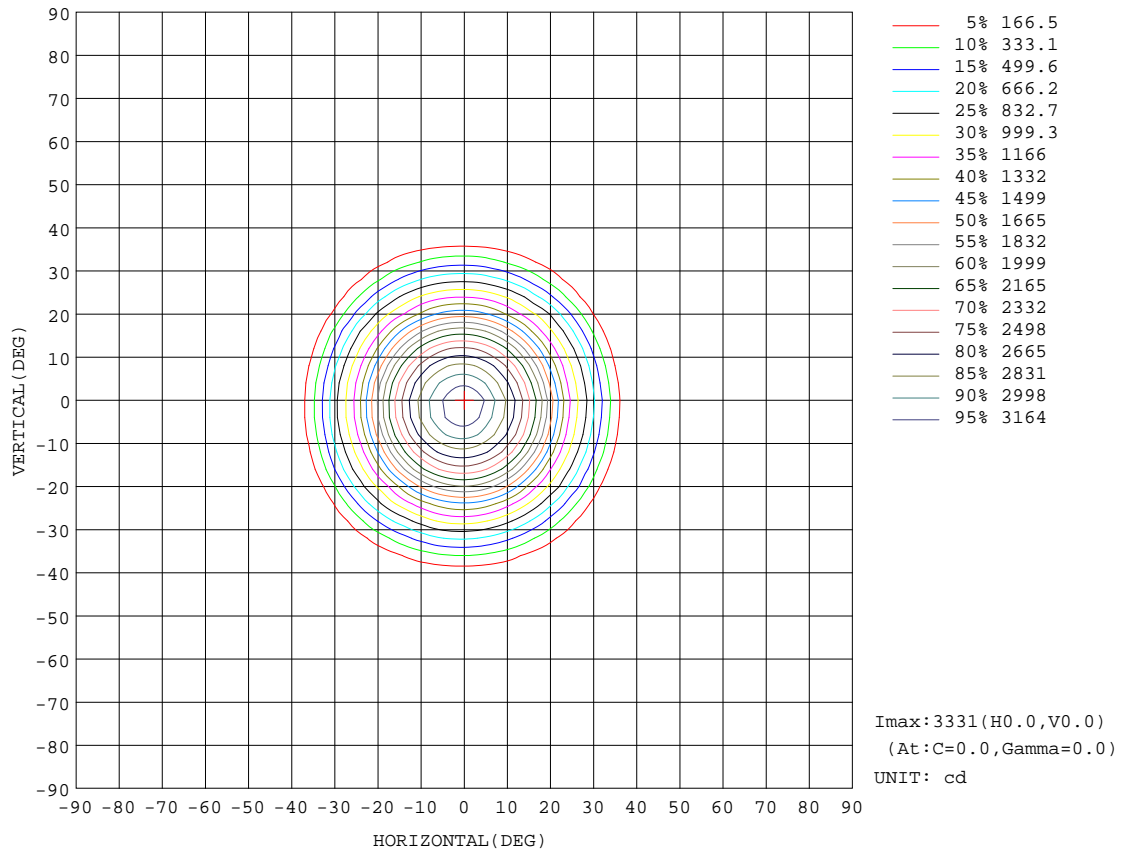
Test:U:230.49V I:0.0949A P:19.999W PF:0.9145 Freq:50.00Hz Lamp Flux:1705.79x1 lm		
NAME: 169-290	TYPE:	WEIGHT:
SPEC.:	DIM.:	SERIAL No.:
MFR.: Tronix Lighting	SUR.:75	Shielding Angle:

REFLECTANCE										
Ceiling	0.8	0.8	0.8	0.7	0.7	0.7	0.5	0.5	0.5	0
Walls	0.7	0.5	0.3	0.7	0.5	0.3	0.7	0.5	0.3	0
Working plane	0.2	0.2	0.2	0.2	0.2	0.2	0.2	0.2	0.2	0
ROOM INDEX	UTILIZATION FACTORS(PERCENT) $k(RI) \times RCR = 5$									
k = 0.60	91	85	82	90	85	82	90	85	81	78
0.80	98	92	89	97	92	89	96	92	89	85
1.00	102	96	93	101	96	93	99	96	92	89
1.25	105	100	97	104	100	97	102	99	96	92
1.50	107	103	100	106	103	100	104	101	99	94
2.00	110	106	103	108	105	102	106	103	101	96
2.50	111	108	105	110	106	104	107	104	102	97
3.00	113	109	107	111	108	106	108	105	104	97
4.00	114	112	110	112	110	109	109	107	106	99
5.00	116	114	112	114	112	110	110	108	107	100
ROOM INDEX	UF(total)									Direct
According to DIN EN 13032-2 2004			Suspended				SHRNOM = 1.25			

V(B) Range:-85 - 85DEG
V(B) Interval: 2.0DEG
Test System:EVERFINE GO-2000B_V1 SYSTEM V2.0.404.7
Humidity:65.0%
Test Distance:8.240m [K=1.0000]
Remarks: 169-290

ISOCANDELA DIAGRAM

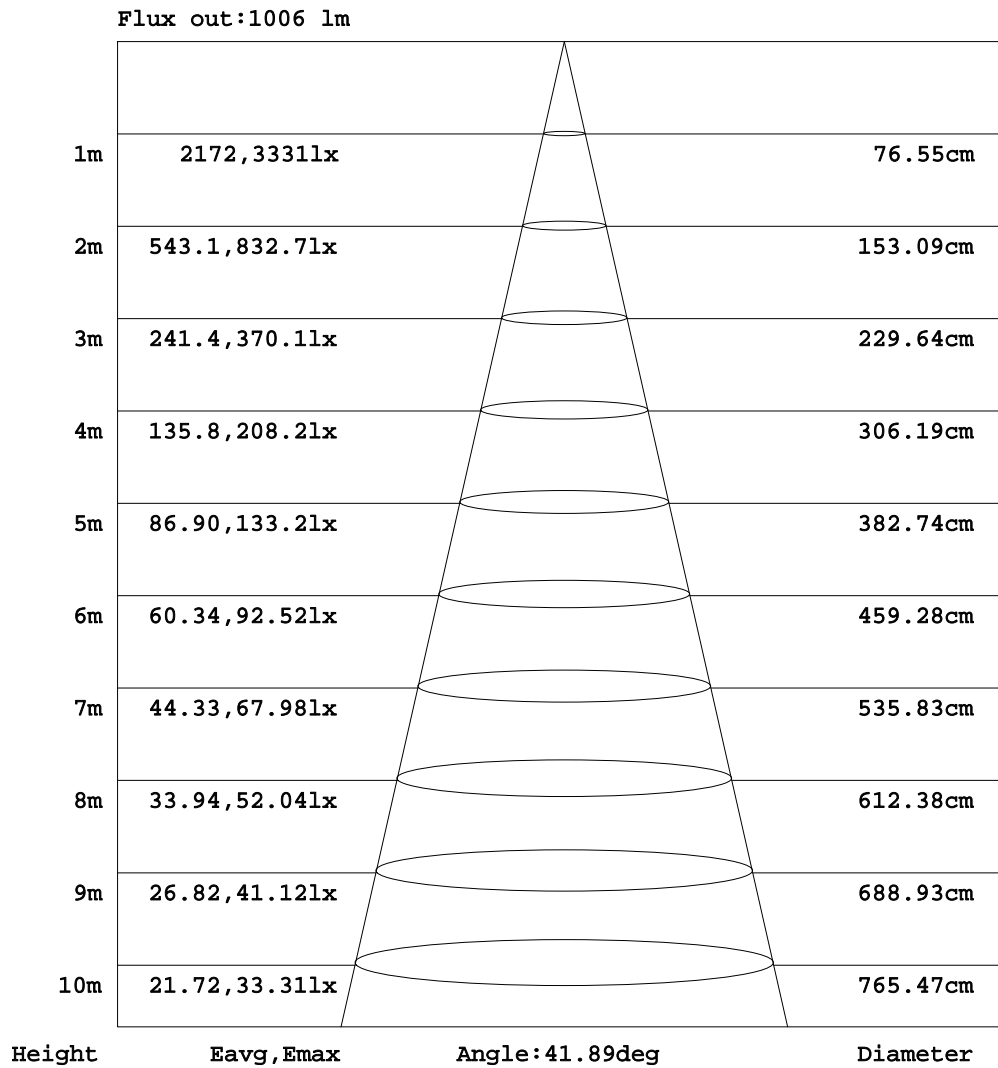
Test:U:230.49V I:0.0949A P:19.999W PF:0.9145 Freq:50.00Hz Lamp Flux:1705.79x1 lm		
NAME: 169-290	TYPE:	WEIGHT:
SPEC.:	DIM.:	SERIAL No.:
MFR.: Tronix Lighting	SUR.:75	Shielding Angle:



V(B) Range:-85 - 85DEG
 V(B) Interval: 2.0DEG
 Test System:EVERFINE GO-2000B_V1 SYSTEM V2.0.404.7
 Humidity:65.0%
 Test Distance:8.240m [K=1.0000]
 Remarks: 169-290

AAI Figure

Test:U:230.49V I:0.0949A P:19.999W PF:0.9145 Freq:50.00Hz Lamp Flux:1705.79x1 lm		
NAME: 169-290	TYPE:	WEIGHT:
SPEC.:	DIM.:	SERIAL No.:
MFR.: Tronix Lighting	SUR.:75	Shielding Angle:

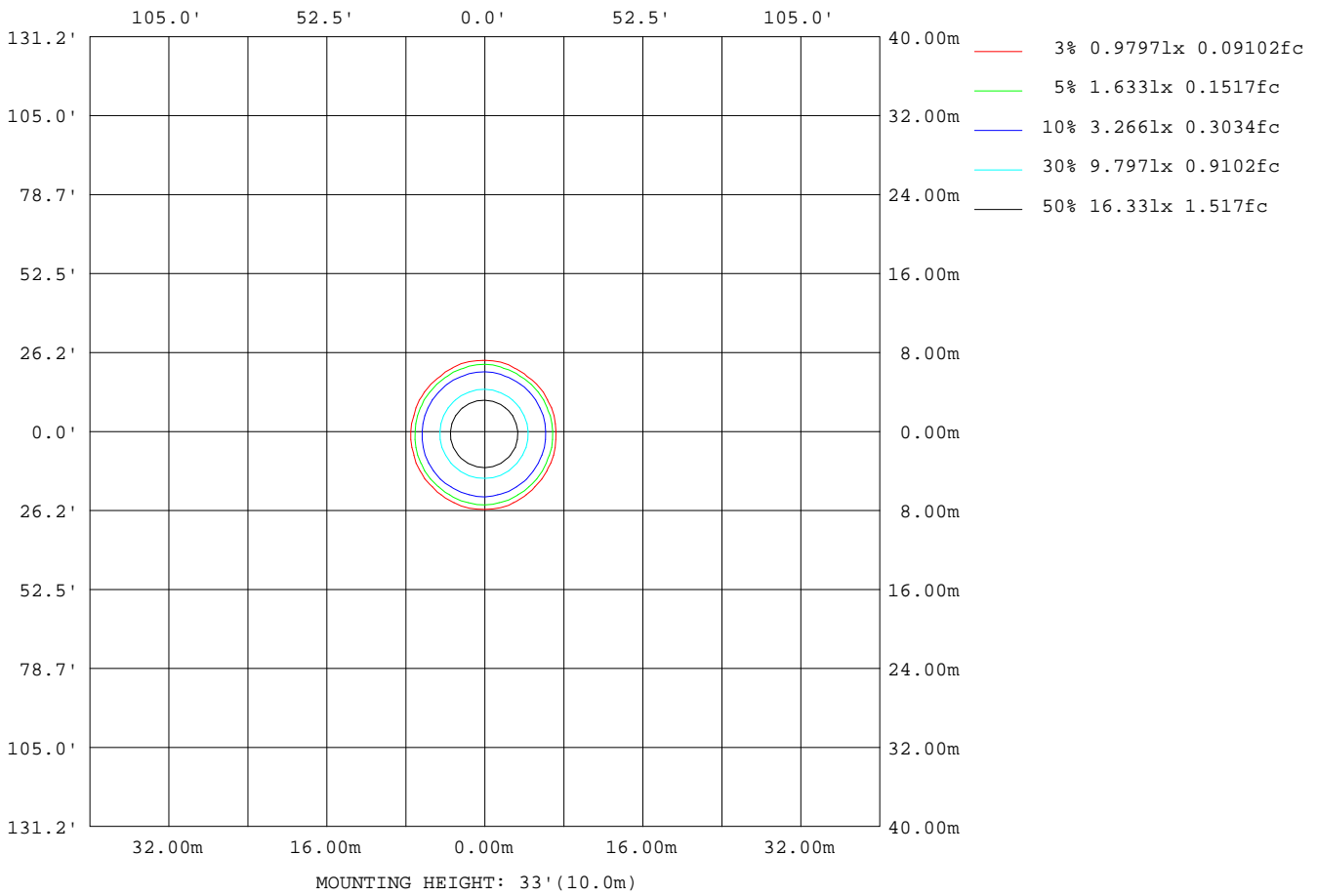


Note:The Curves indicate the illuminated area and the average illumination when the luminaire is at different distance.

V(B) Range:-85 - 85DEG
V(B) Interval: 2.0DEG
Test System:EVERFINE GO-2000B_V1 SYSTEM V2.0.404.7
Humidity:65.0%
Test Distance:8.240m [K=1.0000]
Remarks: 169-290

ISOLUX DIAGRAM

Test:U:230.49V I:0.0949A P:19.999W PF:0.9145 Freq:50.00Hz Lamp Flux:1705.79x1 lm		
NAME: 169-290	TYPE:	WEIGHT:
SPEC.:	DIM.:	SERIAL No.:
MFR.: Tronix Lighting	SUR.:75	Shielding Angle:



V(B) Range:-85 - 85DEG
 V(B) Interval: 2.0DEG
 Test System:EVERFINE GO-2000B_V1 SYSTEM V2.0.404.7
 Humidity:65.0%
 Test Distance:8.240m [K=1.0000]
 Remarks: 169-290

LED Avg.L Report

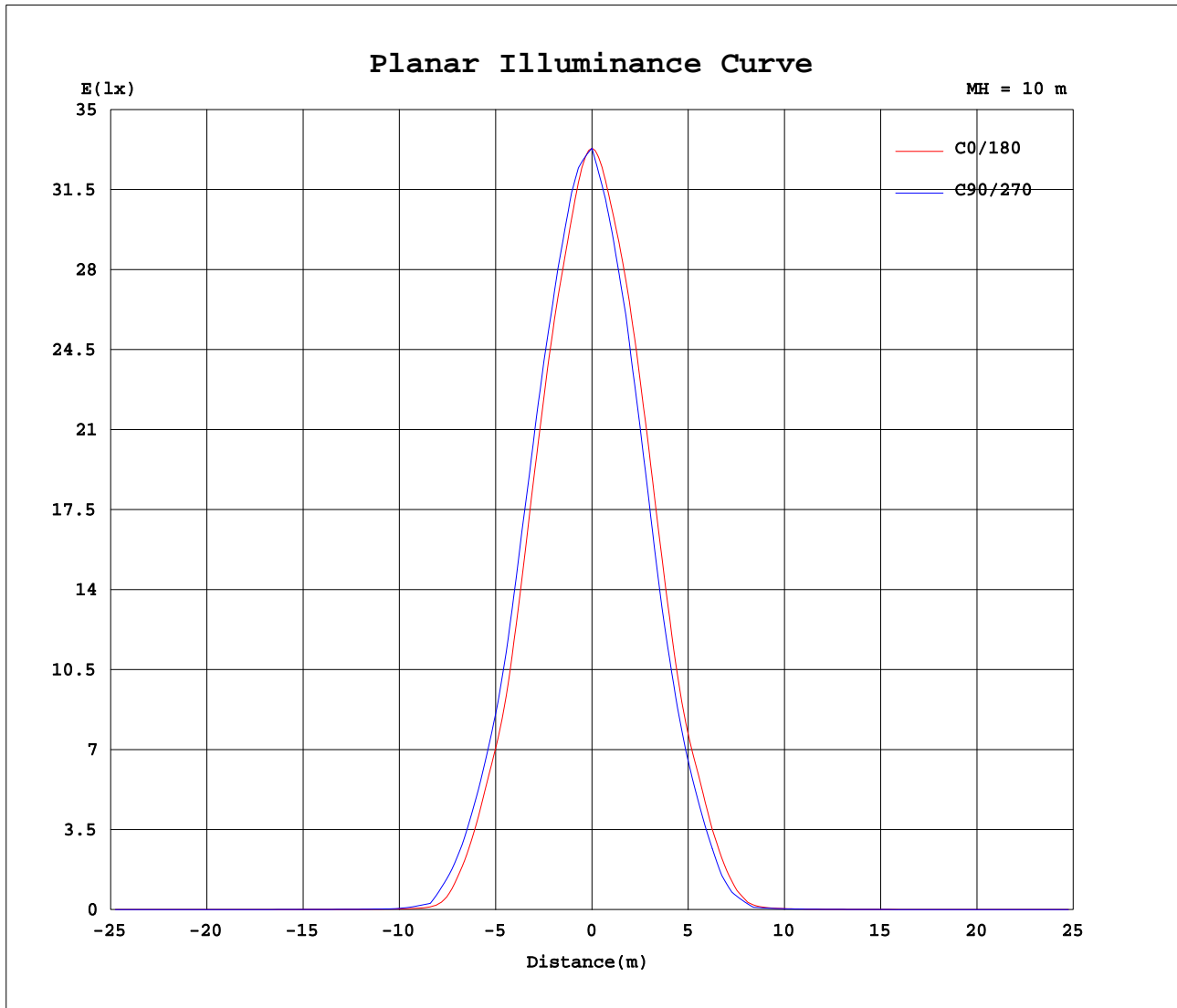
Test:U:230.49V I:0.0949A P:19.999W PF:0.9145 Freq:50.00Hz Lamp Flux:1705.79x1 lm		
NAME: 169-290	TYPE:	WEIGHT:
SPEC.:	DIM.:	SERIAL No.:
MFR.: Tronix Lighting	SUR.:75	Shielding Angle:

AvgL	cd/m2
L_0~180(65)av	1231
L_0~180(75)av	954
L_0~180(85)av	2474
L_90~270(65)av	1566
L_90~270(75)av	1648
L_90~270(85)av	2213
L_45(65)av	1407
L_45(75)av	1447
L_45(85)av	4090

Standard: GB/T 29293-2012

V(B) Range:-85 - 85DEG
V(B) Interval: 2.0DEG
Test System:EVERFINE GO-2000B_V1 SYSTEM V2.0.404.7
Humidity:65.0%
Test Distance:8.240m [K=1.0000]
Remarks: 169-290

Planar Illuminance Curve



V(B) Range:-85 - 85DEG
 V(B) Interval: 2.0DEG
 Test System:EVERFINE GO-2000B_V1 SYSTEM V2.0.404.7
 Humidity:65.0%
 Test Distance:8.240m [K=1.0000]
 Remarks: 169-290

LUMINOUS DISTRIBUTION INTENSITY DATA

Test:U:230.49V I:0.0949A P:19.999W PF:0.9145 Freq:50.00Hz Lamp Flux:1705.79x1 lm		
NAME: 169-290	TYPE:	WEIGHT:
SPEC.:	DIM.:	SERIAL No.:
MFR.: Tronix Lighting	SUR.:75	Shielding Angle:

Table--1

UNIT: cd

C(DEG) γ (DEG)	0	5	10	15	20	25	30	35	40	45	50	55	60	65	70	75	80	85	90
0	3331	3331	3331	3331	3331	3331	3331	3331	3331	3331	3331	3331	3331	3331	3331	3331	3331	3331	3331
5	3142	3136	3133	3132	3133	3136	3141	3148	3157	3166	3178	3188	3195	3203	3209	3216	3222	3225	3230
10	2805	2800	2801	2807	2818	2831	2836	2846	2853	2862	2871	2883	2896	2905	2913	2919	2925	2931	2936
15	2350	2346	2354	2376	2391	2406	2420	2440	2465	2468	2470	2478	2487	2498	2509	2515	2521	2527	2531
20	1740	1734	1749	1768	1786	1814	1847	1846	1859	1884	1901	1918	1929	1943	1956	1971	1982	1989	1992
25	1121	1117	1127	1138	1161	1181	1192	1205	1229	1253	1263	1290	1316	1328	1334	1342	1352	1359	1364
30	690	681	688	696	712	710	732	739	772	773	785	801	811	822	836	848	858	865	873
35	251	246	254	271	271	280	298	305	319	334	345	353	370	379	385	389	400	411	417
40	28.4	28.3	29.7	31.8	32.0	35.6	42.7	42.8	54.5	49.0	69.3	67.5	64.1	85.3	92.1	86.0	74.4	65.4	62.1
45	10.4	10.3	10.5	10.5	10.6	10.9	11.0	11.1	11.6	11.9	12.2	12.7	12.5	13.6	14.9	15.6	16.7	17.2	17.4
50	6.42	6.39	6.43	6.43	6.45	6.46	6.52	6.55	6.63	6.64	6.89	6.99	7.04	7.28	7.42	7.48	7.46	7.44	7.45
55	4.42	4.41	4.42	4.42	4.42	4.44	4.47	4.50	4.59	4.67	4.79	4.88	4.98	5.13	5.25	5.33	5.42	5.49	5.52
60	3.06	3.07	3.06	3.07	3.08	3.10	3.15	3.24	3.35	3.48	3.61	3.74	3.86	3.99	4.08	4.17	4.24	4.28	4.33
65	2.13	2.12	2.12	2.12	2.15	2.21	2.32	2.44	2.59	2.74	2.88	3.00	3.14	3.28	3.39	3.48	3.56	3.64	3.69
70	1.48	1.50	1.51	1.52	1.57	1.67	1.85	2.00	2.13	2.31	2.45	2.59	2.70	2.80	2.90	2.97	3.02	3.13	3.14
75	1.08	1.10	1.11	1.18	1.33	1.51	1.67	1.84	1.96	2.05	2.15	2.29	2.39	2.48	2.56	2.64	2.69	2.75	2.79
80	1.01	1.02	1.07	1.29	1.52	1.68	1.83	1.89	1.97	2.04	2.10	2.18	2.25	2.31	2.41	2.43	2.47	2.52	2.53
85	1.00	1.05	1.48	1.71	1.85	1.89	1.93	1.94	1.96	2.01	2.06	2.12	1.92	1.69	1.52	1.38	1.28	1.23	1.22
90	0.06	0.00	0.00	0.00	0.00	0.00	0.00	0.00	0.00	0.00	0.00	0.00	0.00	0.00	0.00	0.00	0.00	0.00	0.00

V(B) Range:-85 - 85DEG
 V(B) Interval: 2.0DEG
 Test System:EVERFINE GO-2000B_V1 SYSTEM V2.0.404.7
 Humidity:65.0%
 Test Distance:8.240m [K=1.0000]
 Remarks: 169-290

LUMINOUS DISTRIBUTION INTENSITY DATA

Test:U:230.49V I:0.0949A P:19.999W PF:0.9145 Freq:50.00Hz Lamp Flux:1705.79x1 lm		
NAME: 169-290	TYPE:	WEIGHT:
SPEC.:	DIM.:	SERIAL No.:
MFR.: Tronix Lighting	SUR.:75	Shielding Angle:

Table--2

UNIT: cd

C(DEC) γ (DEC)	95	100	105	110	115	120	125	130	135	140	145	150	155	160	165	170	175	180	185
0	3331	3331	3331	3331	3331	3331	3331	3331	3331	3331	3331	3331	3331	3331	3331	3331	3331	3331	3331
5	3229	3230	3228	3227	3225	3221	3219	3213	3204	3195	3187	3179	3173	3168	3164	3162	3162	3163	3149
10	2940	2942	2943	2943	2941	2940	2937	2934	2932	2929	2926	2918	2914	2903	2891	2883	2880	2882	2859
15	2534	2536	2539	2540	2536	2528	2521	2516	2518	2518	2501	2492	2487	2480	2473	2452	2441	2441	2414
20	1991	1987	1982	1976	1971	1969	1968	1966	1956	1944	1935	1930	1909	1897	1893	1878	1856	1854	1823
25	1364	1361	1357	1357	1360	1359	1343	1326	1325	1323	1310	1294	1279	1263	1255	1248	1228	1223	1208
30	881	886	881	863	858	859	873	872	853	857	840	843	831	818	811	809	794	783	763
35	419	419	408	412	409	411	401	412	411	399	390	375	373	360	348	337	326	311	303
40	66.4	77.0	90.7	103	101	82.1	85.8	91.4	70.4	80.1	71.6	69.5	60.7	60.1	55.4	51.3	49.6	45.5	44.6
45	17.5	17.3	16.4	16.3	15.6	14.5	15.4	15.3	15.2	14.9	14.2	14.6	14.4	14.1	14.1	13.8	13.6	13.3	13.3
50	7.57	7.72	7.85	7.94	7.85	7.65	7.69	7.65	7.36	7.55	7.47	7.37	7.44	7.38	7.41	7.34	7.43	7.37	7.43
55	5.55	5.57	5.55	5.55	5.51	5.41	5.34	5.27	5.17	5.09	5.00	4.94	4.91	4.91	4.91	4.93	4.96	4.98	5.02
60	4.39	4.44	4.44	4.42	4.37	4.27	4.20	4.08	3.96	3.85	3.70	3.58	3.50	3.44	3.43	3.44	3.47	3.49	3.52
65	3.73	3.76	3.71	3.73	3.66	3.58	3.49	3.39	3.25	3.10	2.96	2.77	2.60	2.47	2.42	2.43	2.43	2.45	2.46
70	3.18	3.22	3.22	3.22	3.16	3.09	3.01	2.89	2.80	2.68	2.51	2.29	2.07	1.84	1.67	1.61	1.62	1.64	1.63
75	2.81	2.82	2.80	2.77	2.73	2.69	2.64	2.58	2.50	2.40	2.26	2.10	1.88	1.60	1.28	1.09	1.06	1.09	1.08
80	2.55	2.56	2.57	2.57	2.53	2.48	2.43	2.39	2.34	2.30	2.24	2.19	2.04	1.85	1.52	1.08	0.87	0.92	0.88
85	1.24	1.31	1.43	1.60	1.77	2.02	2.25	2.22	2.19	2.18	2.18	2.19	2.17	2.14	2.08	1.78	1.07	0.90	0.86
90	0.00	0.00	0.00	0.00	0.00	0.00	0.00	0.00	0.00	0.00	0.00	0.00	0.00	0.00	0.00	0.00	0.00	0.17	0.00

V(B) Range:-85 - 85DEG
V(B) Interval: 2.0DEG
Test System:EVERFINE GO-2000B_V1 SYSTEM V2.0.404.7
Humidity:65.0%
Test Distance:8.240m [K=1.0000]
Remarks: 169-290

LUMINOUS DISTRIBUTION INTENSITY DATA

Test:U:230.49V I:0.0949A P:19.999W PF:0.9145 Freq:50.00Hz Lamp Flux:1705.79x1 lm		
NAME: 169-290	TYPE:	WEIGHT:
SPEC.:	DIM.:	SERIAL No.:
MFR.: Tronix Lighting	SUR.:75	Shielding Angle:

Table--3

UNIT: cd

C(DEG) γ (DEG)	190	195	200	205	210	215	220	225	230	235	240	245	250	255	260	265	270	275	280
0	3331	3331	3331	3331	3331	3331	3331	3331	3331	3331	3331	3331	3331	3331	3331	3331	3331	3331	3331
5	3137	3127	3119	3112	3107	3103	3100	3096	3094	3090	3086	3083	3079	3077	3075	3072	3071	3068	3067
10	2842	2830	2824	2818	2805	2798	2784	2770	2758	2749	2744	2741	2737	2734	2730	2726	2722	2718	2715
15	2399	2395	2378	2360	2340	2326	2322	2303	2281	2266	2254	2245	2237	2226	2216	2209	2204	2199	2197
20	1812	1798	1775	1758	1746	1725	1710	1699	1686	1669	1652	1638	1625	1615	1604	1596	1591	1587	1585
25	1205	1191	1180	1171	1163	1152	1142	1134	1111	1096	1098	1098	1092	1080	1069	1061	1056	1054	1055
30	752	727	713	706	696	687	670	670	658	655	651	638	630	627	621	616	613	612	604
35	290	279	270	271	247	250	241	241	234	211	230	230	218	206	207	206	205	203	198
40	42.0	40.6	38.8	36.7	39.0	36.9	40.9	32.3	39.7	40.2	32.4	38.0	41.6	39.7	33.4	26.7	23.6	25.6	31.1
45	13.0	13.0	12.8	12.8	12.6	12.2	12.6	12.5	12.5	12.1	11.9	12.2	12.2	12.0	11.9	11.7	11.6	11.4	11.3
50	7.35	7.40	7.35	7.38	7.31	7.34	7.36	7.22	7.32	7.28	7.20	7.24	7.22	7.16	7.04	6.89	6.78	6.73	6.76
55	5.05	5.06	5.07	5.04	5.05	5.04	5.04	5.02	5.02	4.95	4.93	4.92	4.89	4.84	4.82	4.83	4.79	4.72	4.66
60	3.56	3.55	3.54	3.53	3.53	3.52	3.52	3.49	3.47	3.43	3.40	3.39	3.36	3.33	3.30	3.23	3.20	3.16	3.15
65	2.46	2.45	2.42	2.41	2.40	2.39	2.35	2.34	2.34	2.31	2.29	2.26	2.23	2.19	2.18	2.15	2.13	2.14	2.12
70	1.63	1.62	1.61	1.60	1.56	1.57	1.55	1.52	1.48	1.47	1.46	1.46	1.43	1.40	1.36	1.33	1.32	1.30	1.32
75	1.07	1.06	1.06	1.06	1.05	1.02	1.03	1.02	1.02	1.03	1.02	1.01	0.98	0.97	0.97	0.96	0.96	0.96	0.97
80	0.87	0.88	0.92	0.92	0.94	0.96	0.96	0.95	0.94	0.93	0.92	0.92	0.92	0.92	0.92	0.91	0.91	0.91	0.92
85	0.92	0.96	1.02	1.02	1.01	1.01	1.02	1.02	1.02	1.01	0.89	0.76	0.65	0.58	0.52	0.49	0.48	0.49	0.52
90	0.00	0.00	0.00	0.00	0.00	0.00	0.00	0.00	0.00	0.00	0.00	0.00	0.00	0.00	0.00	0.00	0.00	0.00	0.00

V(B) Range:-85 - 85DEG
V(B) Interval: 2.0DEG
Test System:EVERFINE GO-2000B_V1 SYSTEM V2.0.404.7
Humidity:65.0%
Test Distance:8.240m [K=1.0000]
Remarks: 169-290

LUMINOUS DISTRIBUTION INTENSITY DATA

Test:U:230.49V I:0.0949A P:19.999W PF:0.9145 Freq:50.00Hz Lamp Flux:1705.79x1 lm		
NAME: 169-290	TYPE:	WEIGHT:
SPEC.:	DIM.:	SERIAL No.:
MFR.: Tronix Lighting	SUR.:75	Shielding Angle:

Table--4

UNIT: cd

C(DEG) γ (DEG)	285	290	295	300	305	310	315	320	325	330	335	340	345	350	355				
0	3331	3331	3331	3331	3331	3331	3331	3331	3331	3331	3331	3331	3331	3331	3331				
5	3065	3064	3065	3066	3068	3070	3070	3072	3075	3079	3085	3093	3102	3113	3127				
10	2712	2709	2707	2706	2703	2704	2708	2713	2720	2724	2734	2740	2747	2761	2780				
15	2197	2199	2198	2199	2204	2214	2229	2242	2238	2240	2253	2268	2281	2291	2314				
20	1584	1583	1585	1588	1593	1596	1601	1602	1617	1641	1641	1646	1661	1678	1699				
25	1056	1055	1058	1048	1047	1052	1063	1060	1063	1073	1080	1083	1082	1089	1099				
30	596	597	597	602	593	608	615	623	625	630	638	649	656	659	667				
35	188	193	198	197	173	194	193	190	202	199	204	209	221	221	228				
40	34.7	32.8	28.6	24.3	30.9	28.8	23.6	27.7	25.0	27.0	25.1	25.0	26.5	26.3	26.6				
45	11.1	11.1	10.9	10.5	10.5	10.5	10.3	10.3	10.1	10.1	10.1	10.0	9.98	10.2	10.1				
50	6.75	6.73	6.65	6.55	6.54	6.51	6.38	6.41	6.37	6.35	6.29	6.29	6.27	6.32	6.32				
55	4.61	4.58	4.54	4.48	4.44	4.46	4.45	4.42	4.39	4.37	4.36	4.34	4.35	4.35	4.37				
60	3.14	3.14	3.14	3.12	3.13	3.12	3.09	3.09	3.09	3.07	3.05	3.04	3.04	3.03	3.05				
65	2.11	2.11	2.11	2.11	2.09	2.12	2.14	2.14	2.12	2.14	2.12	2.12	2.11	2.12	2.12				
70	1.32	1.37	1.36	1.37	1.40	1.41	1.42	1.40	1.43	1.45	1.43	1.46	1.46	1.47	1.48				
75	0.97	0.98	0.98	0.99	1.00	0.99	1.03	1.07	1.06	1.05	1.06	1.06	1.07	1.08	1.09				
80	0.92	0.94	0.95	0.96	0.97	0.97	0.98	0.99	1.00	1.03	1.03	1.01	1.01	1.01	1.02				
85	0.57	0.65	0.74	0.88	1.01	1.04	1.06	1.07	1.09	1.12	1.11	1.07	1.07	1.01	1.00				
90	0.00	0.00	0.00	0.00	0.00	0.00	0.00	0.00	0.00	0.00	0.00	0.00	0.00	0.00	0.00				

V(B) Range:-85 - 85DEG
V(B) Interval: 2.0DEG
Test System:EVERFINE GO-2000B_V1 SYSTEM V2.0.404.7
Humidity:65.0%
Test Distance:8.240m [K=1.0000]
Remarks: 169-290